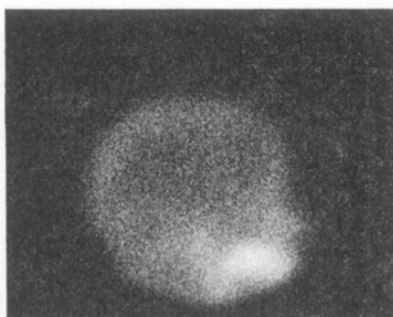


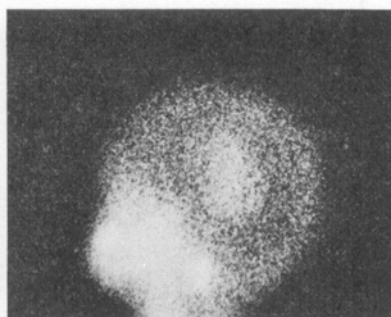
# routine Scintigraphy diagnoses with

# Scinticamera III NE 8251

## Brain Scintigraphy



Right Lateral—Normal



Left Lateral—Showing large tumour

(By courtesy of Leeds General Infirmary)

- \*Simple to use. Operators do not require special training.
- \*Fast, non-traumatic examinations. Typical scintiphotos obtained in less than two minutes.
- \*Silent in operation. No scanning action. Suitable for use with children and infants.
- \*Pictures can be taken from any angle. Seriously ill patients can be examined quickly in the most comfortable position.
- \*Automatic dynamic sequences of pictures can be taken at frame speeds up to 3 pictures per second.

The scintiphotos show lateral views of the brains of two patients. The right-hand picture shows a large tumour developing in the brain of a seven-month-old baby. Brain scintigraphy is a simple technique without danger or discomfort to the patient and is useful for the detection of brain tumours and the study of abnormalities of the cerebral circulation.



## NUCLEAR ENTERPRISES LIMITED

Sighthill, Edinburgh, EH11 4EY, Scotland. Telephone: 031-443 4060 Cables: Nuclear, Edinburgh. Telex: 72333  
Associate Companies: Nuclear Enterprises GmbH, 8 Munich 2, Karlstrasse 45, West Germany. Telephone: 55 30 03. Telex: 529938  
Nuclear Enterprises Inc., 935 Terminal Way, San Carlos, California 94070. Telephone: 415-593-1455. Telex: 348371

**"I can say...**

'laboratory reagents for fluorescent antibody techniques, complement fixation tests, identification of bacteria and viruses, haematology, pregnancy diagnosis, buffering, radio-immunoassay, quality control sera, microfiltrations and veterinary diagnosis'

**in 12.5 seconds!  
Beat that if you can!"**

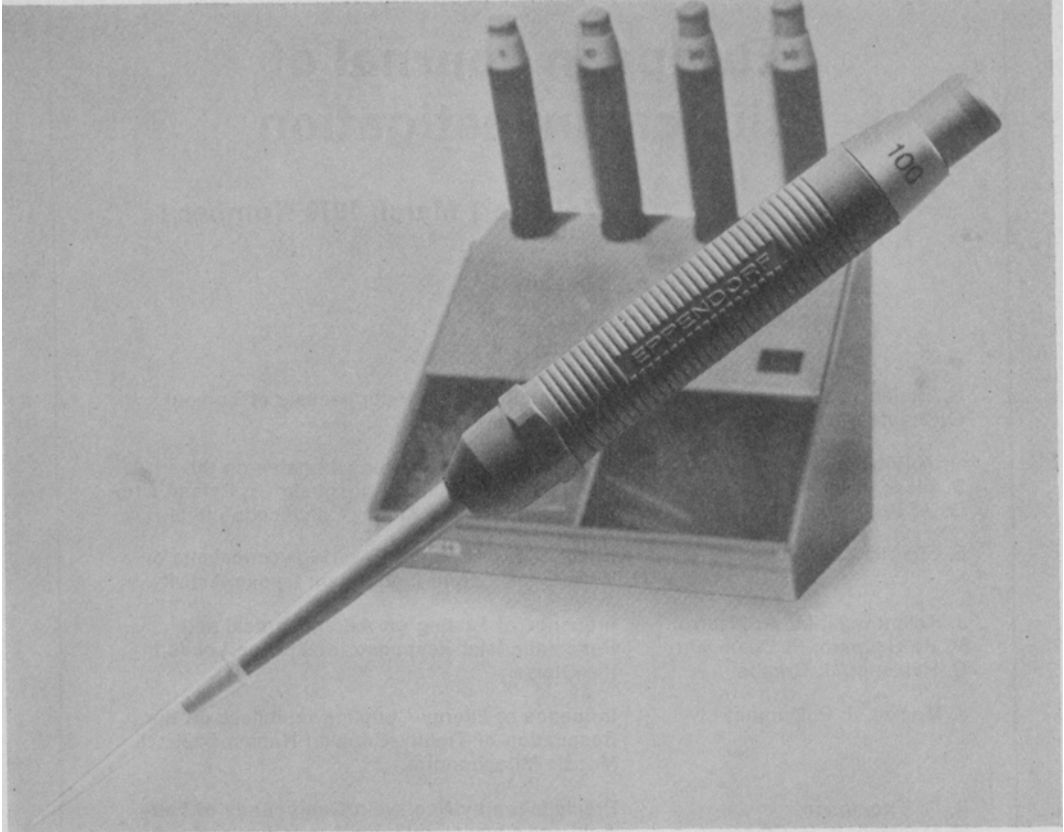
**"Wellcome"**

Quick, too, is the delivery of all these laboratory diagnostics from Wellcome Reagents Limited. They are subjected to rigorous quality control, their performance is consistent and they are backed by Wellcome Research Laboratories' own original immunological work.



**Wellcome Reagents Limited**

Wellcome Research Laboratories Beckenham Kent BR3 3BS



***NEW!***

**THE EPPENDORF  
RANGE OF  
MICROLITER  
PIPETTES**

- \* 5—1000  $\mu$ l range
- \* Greater accuracy
- \* Longer life
- \* Extended tips for test-tube sampling
- \* Complete reliability

*For full details and prices please contact*

---

**V. A. HOWE & CO. LTD.**

88 PETERBOROUGH ROAD, LONDON S.W.6 01-736 8262 & 01-736 8394

---

# European Journal of Clinical Investigation

**Volume 1 March 1970 Number 1**

## **Contents**

introduction.

- |  |   |
|--|---|
| H. Frerichs, B. Willms, H. Kasper,<br>C. Creutzfeldt, W. Creutzfeldt                   | Contribution to the Pathogenesis of Tumour Hypoglycaemia.   |
| H. A. Fleisch, R. G. G. Russeil,<br>S. Bisaz, R. C. Mühlbauer,<br>D. A. Williams       | The Inhibitory Effect Phosphonates on the Formation of Calcium Phosphate Crystals in vitro and on Aortic and Kidney Calcification in vivo.  |
| E. Shafrir, Y. Biale   | Effect of Experimental Hypertriglyceridaemia on Tissue and Serum Lipoprotein Lipase Activity.   |
| J. Kolanowski, M. A. Pizarro,<br>M. de Gasparo, P. Desmecht,<br>C. Harvengt, J. Crabbé | Influence of Fasting on Adrenocortical and Pancreatic Islet Response to Glucose Loads in the Obese.   |
| J. Mockel, J. E. Dumont  | Influence of Energy-Coupling Inhibitors on the Respiration of Tightly-Coupled Human Skeletal Muscle Mitochondria.                           |
| R. G. Thompson,<br>M. MacMahon, P. Claes   | Precipitation by Neomycin Compounds of Fatty Acid and Cholesterol from Mixed Micellar Solutions.  |
| O. Oelz, A. Jakob, E. R. Froesch   | Nonsuppressible Insulin-Like Activity (NSILA) of Human Serum. V. Hypoglycaemia and Preferential Metabolic Stimulation of Muscle by NSILA-S. |
| L. M. Blendis, C. Ramboer,<br>R. Williams  | Studies on the Haemodilution Anaemia of Splenomegaly.   |
| P. Franchimont   | A Study on the Cross-Reaction between Human Chorionic and Pituitary Luteinizing Hormones (HCG and HLH).                                     |
| A. Lockhart, F. Nader,<br>M. Tzareva, F. Schrijen                                      | Comparative Effects of Exercise and Isocapnic Voluntary Hyperventilation on Pulmonary Haemodynamics in Chronic Bronchitis and Emphysema     |



**Published by  
Springer-Verlag Berlin · Heidelberg · New York  
on behalf of the  
European Society for Clinical Investigation**

VOLUME 49

NOVEMBER 1970

NUMBER 11

## The Journal of Clinical Investigation

EDITED FOR

THE AMERICAN SOCIETY FOR CLINICAL INVESTIGATION, INC.

Imbalances of gamma globulin subgroups and gene defects in patients with primary hypogammaglobulinemia. W. J. YOUNT, R. HONG, M. SELIGMANN, R. GOOD, and H. G. KUNKEL

Relation of renal cortical gluconeogenesis, glutamate contents, and production of ammonia. ANTHONY S. PAGLIARA and A. DAVID GOODMAN

Studies in vivo and in vitro on an abnormality in the metabolism of C3 in a patient with increased susceptibility to infection. CHESTER A. ALPER, NEIL ABRAMSON, RICHARD B. JOHNSTON, JR., JAMES H. JANDL, and FRED S. ROSEN

Erythropoiesis in the anemia of bone marrow failure. RAYMOND ALEXANIAN and CLARENCE ALFREY

Mechanism of action of thyroid hormones on erythrocyte 2,3-diphosphoglycerate synthesis. L. MICHAEL SNYDER and WILLIAM J. REDDY

Blood levels and production rate of 17-hydroxypregnenolone in man. C. A. STROTT, J. A. BERMUDEZ, and M. B. LIPSETT

The role of hemoglobin heme loss in Heinz body formation: studies with a partially heme-deficient hemoglobin and with genetically unstable hemoglobins. HARRY S. JACOB and KASPAR H. WINTERHALTER

Splanchnic metabolism of free fatty acids and production of triglycerides of very low density lipoproteins in normotriglyceridemic and hypertriglyceridemic humans. R. J. HAVEL, J. P. KANE, E. O. BALASSE, N. SEGEL, and L. V. BASSO

Hemodynamic effects of phenoxybenzamine in anesthetized dogs. NOBLE O. FOWLER, JOHN C. HOLMES, THOMAS E. GAFFNEY, PHILIP J. PRIVITFRA, and GUNTER GRUPP

Nucleoside deaminase: an enzymatic marker for stress erythropoiesis in the mouse. IVAN K. ROTHMAN, ESMAIL D. ZANJANI, ALBERT S. GORDON, and ROBERT SILBER

Qualitative description of factors involved in the retraction and lysis of dilute whole blood clots and in the aggregation and retraction of platelets. FLETCHER B. TAYLOR, JR., and HANS J. MÜLLER-EBERHARD

Human alveolar macrophages: comparison of phagocytic ability, glucose utilization, and ultrastructure in smokers and nonsmokers. JAMES O. HARRIS, EDWARD W. SWENSON, and JOSEPH E. JOHNSON III

Perfusion of rat pancreatic tissue in vitro: substrate modification of theophylline-induced biphasic insulin release. IAN M. BURR, LUC BALANT, WERNER STAUFFACHER, and ALBERT E. RENOLD

Localization of fluorescein-labeled antinucleoside antibodies in glomeruli of patients with active systemic lupus erythematosus nephritis. G. A. ANDRES, L. ACCINNI, S. M. BEISER, C. L. CHRISTIAN, G. A. CINOTTI, B. F. ERLANGER, K. C. HSU, and B. C. SEGAL

Potassium balance and the control of renin secretion. JEAN E. SEALEY, IRWIN CLARK, MARCIA B. BULL, and JOHN H. LARAGH

The influence of potassium administration and of potassium deprivation on plasma renin in normal and hypertensive subjects. HANS R. BRUNNER, LESLIE BAER, JEAN E. SEALEY, JOHN G. G. LEDINGHAM, and JOHN H. LARAGH

Reduced brain glucose with normal plasma glucose in salicylate poisoning. JEAN HOLOWACH THURSTON, PHILIP G. POLLOCK, SHEILA K. WARREN, and ELIZABETH M. JONES

The role of phosphate in the secretion of parathyroid hormone in man. ERIC REISS, JANET M. CANTERBURY MARGARET A. BERKOVITZ, and EDWIN L. KAPLAN

Yearly subscription rates: \$45.00 payable in U.S. funds

may be obtained from

**THE JOURNAL OF CLINICAL INVESTIGATION**

**The Rockefeller University, New York 10021, U.S.A.**

# The Journal of Endocrinology

**Volume 48, Number 3, November 1970**

## CONTENTS

- H. K. AMIN AND W. M. HUNTER. Human pituitary follicle-stimulating hormone: distribution, plasma clearance and urinary excretion as determined by radioimmunoassay
- V. H. T. JAMES, MARIAN W. HORNER, M. S. MOSS AND A. E. RIPPON. Adrenocortical function in the horse ANGELA FAIRNEY AND A. A. WEIR. The effect of abnormal maternal plasma calcium levels on the offspring of rats
- L. MARTIN AND C. A. FINN. The effects of an intra-uterine device on uterine cell division and epithelial morphology during early pregnancy in the mouse
- MUSTAQA A. KHAN, W. M. DICKSON AND K. M. MEYERS. The effect of low environmental temperature on plasma corticosteroid and glucose concentrations in the newborn calf
- A. DANON, C. P. WELLER AND F. G. SULMAN. Role of oestrogens and gonadotrophins in perphenazine-induced mammogenesis
- T. NIKKARI AND M. VALAVAARA. Effects of androgens and prolactin on the rate of production and composition of sebum in hypophysectomized female rats
- A. JOSEPHINE MILNER AND I. H. MILLS. Effects of human pituitary extracts on androgen biosynthesis by human adrenals *in vitro*
- F. P. VINCE, BARBARA J. BOUCHER, R. D. COHEN AND JEAN GODFREY. The response of plasma sugar, free fatty acids, 11-hydroxycorticosteroids and growth hormone to insulin-induced hypoglycaemia and vasopressin in primary myxoedema
- W. A. LOEVEN. Effect of hypophysectomy of female rats on the activity of pancreatic elastolytic enzymes and the elastin content of heart, lung and aorta
- DOREEN V. ILLINGWORTH, R. B. HEAP AND J. S. PERRY. Changes in the metabolic clearance rate of progesterone in the guinea-pig
- J. G. M. SHIRE. Genetic variation in adrenal structure: quantitative measurements on the cortex and medulla in hybrid mice
- P. E. HARTMANN, A. T. COWIE AND ZENA D. HOSKING. Changes in enzymic activity, chemical composition and histology of the mammary glands and metabolites in the blood of lactating rabbits after hypophysectomy and replacement therapy with sheep prolactin, human growth hormone or bovine growth hormone
- K. J. RANADIVE AND K. A. KARANDE. Pituitaries of spayed mice of different strains: cytology and gonadotrophin content
- K. A. KARANDE, N. A. SHETH AND K. J. RANADIVE. Follicle-stimulating hormone content of the pituitary glands of intact and ovariectomized mice of different strains

50s. net in U.K. (\$8.50 in U.S.A.)

Annual subscription £24 net in U.K. (\$84.00 in U.S.A.) for twelve issues

**CAMBRIDGE UNIVERSITY PRESS**

Bentley House, 200 Euston Road, London N.W.1

32 East 57th Street, New York, N.Y. 10022