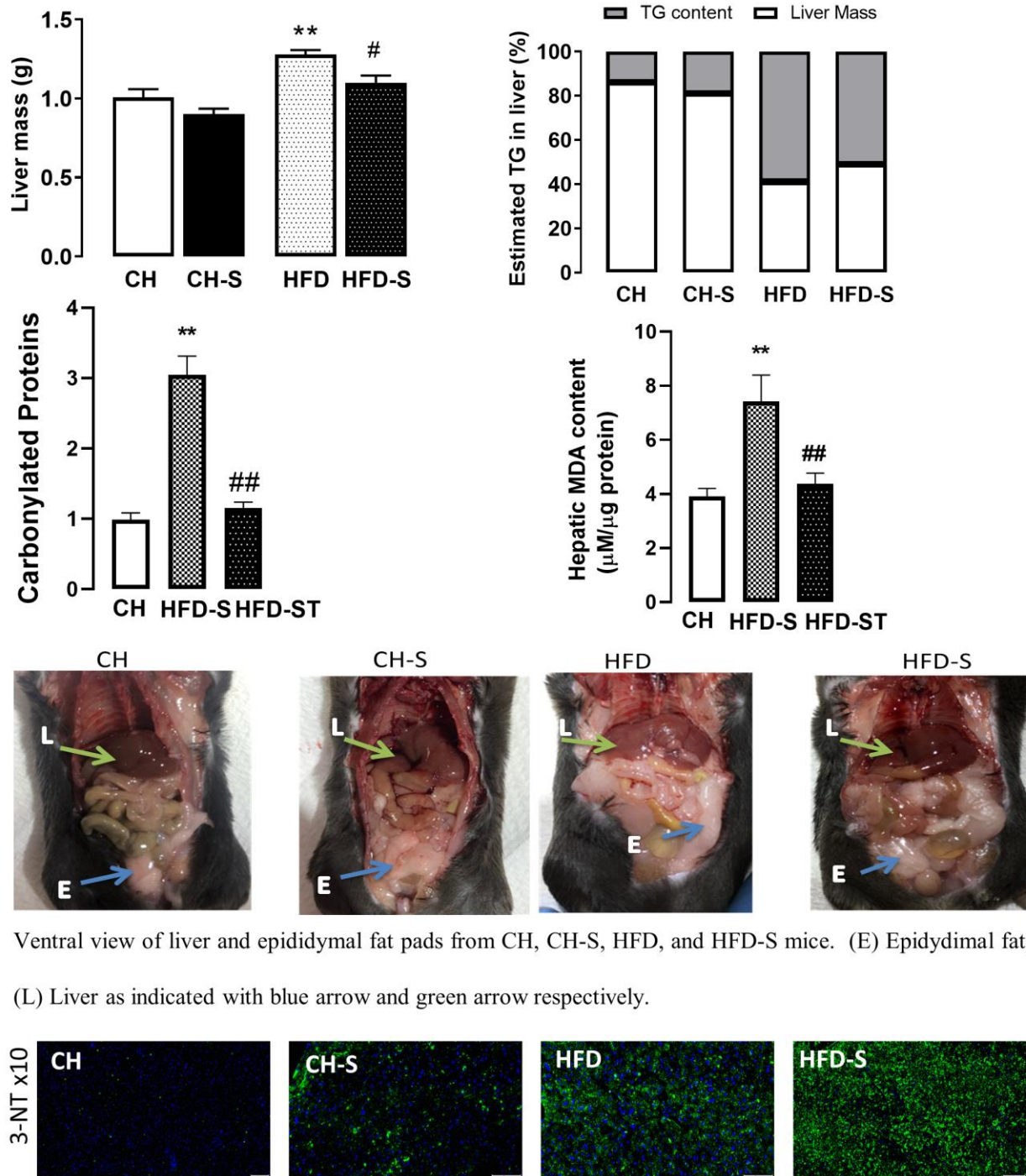


Supplementary Data



Ventral view of liver and epididymal fat pads from CH, CH-S, HFD, and HFD-S mice. (E) Epididymal fat, (L) Liver as indicated with blue arrow and green arrow respectively.

3-NT staining at 10x magnification. Smoke alone induced an increase in 3-NT expression along with HFD-feeding. The combined group induced a much higher rise in expression of 3-NT consistent with macrophage infiltration was markedly increased in this mice group compared to HFD alone.