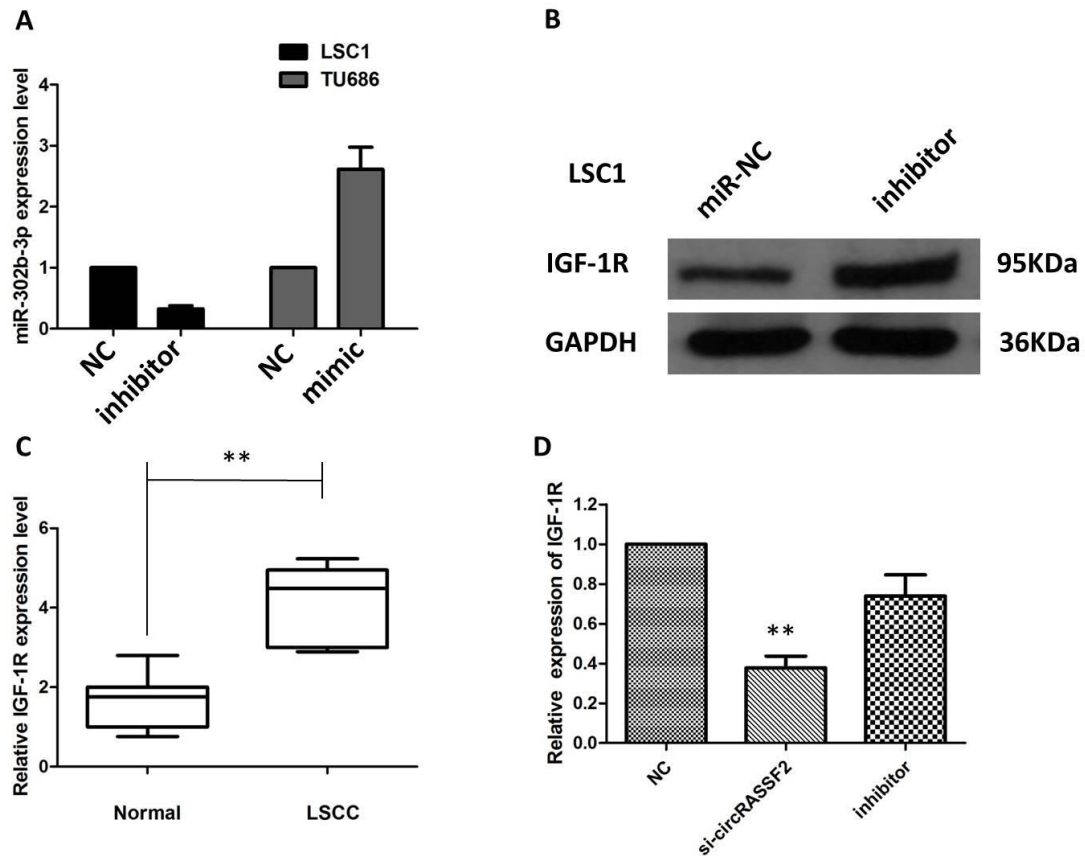


Supplementary Fig.S1A. the levels of circRASSF2 in LSCC cells, compared to that in a non-tumorigenic cell, NHBEC. Data are the means  $\pm$  SD of three experiments. B. circRASSF2 knockdown significantly reduced cancer cell colony forming ability of LSC1 cells, circRASSF2 overexpression promoted TU686 cell colony-forming ability. C Flow cytometric analysis showed that circRASSF2 knockdown significantly induced apoptosis of LSC1 cells, circRASSF2 overexpression inhibited apoptosis of TU686 cells. D. Transwell migration and Matrigel invasion

assay showed that circRASSF2 knockdown significantly repressed the ability of cell migration and invasion of LSC1 cells



Supplementary Fig.S2A miR-302b-3p mimics or inhibitor was transfected into LSCC cell lines. B. Transfection of the miR-302b-3p inhibitor increased the expression of IGF-1R in TU686 cells. C. IGF-1R expression was higher in LSCC tissues compared to in their normal counterparts. D. miR-302b-3p inhibitor could significantly reduce the downregulation of IGF-1R expression after silencing of circRASSF2.