

SUPPLEMENTARY ONLINE DATA

Ribonucleotide reductase small subunit M2 serves as a prognostic biomarker and predicts poor survival of colorectal cancers

Xiyong LIU*¹, Hang ZHANG*^{†1}, Lily LAI[‡], Xiaochen WANG[§], Sofia LOERA[¶], Lijun XUE[¶], Huiyin HE[¶], Keqiang ZHANG*, Shuya HU*, Yasheng HUANG*, Rebecca A. NELSON^{||}, Bingsen ZHOU*, Lun ZHOU[†], Peiguo CHU^{||}, Suzhan ZHANG[†], Shu ZHENG[†] and Yun YEN*

*Department of Molecular Pharmacology, Beckman Research Institute, City of Hope National Comprehensive Cancer Center, Duarte, CA 91010-3000, U.S.A.

[†]Cancer Institute (Key Laboratory of Cancer Prevention and Intervention, National Ministry of Education), Zhejiang University, Hangzhou, Zhejiang 310009, People's Republic of China

[‡]Department of Surgery, Beckman Research Institute, City of Hope National Comprehensive Cancer Center, Duarte, CA 91010-3000, U.S.A.

[§]Surgical Oncology of Second Affiliated Hospital, Zhejiang University, Hangzhou, Zhejiang 310009, People's Republic of China

[¶]Department of Anatomic Pathology, Beckman Research Institute, City of Hope National Comprehensive Cancer Center, Duarte, CA 91010-3000, U.S.A.

^{||}Department of Information Sciences, Beckman Research Institute, City of Hope National Comprehensive Cancer Center, Duarte, CA 91010-3000, U.S.A.

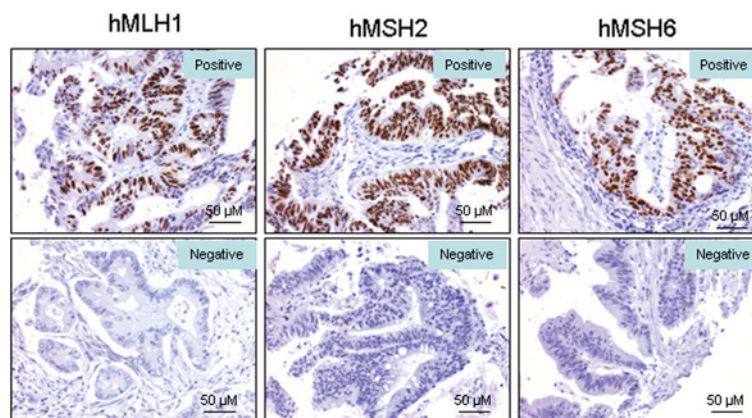


Figure S1 IHC staining of mismatch repair genes' protein for CRCs

Detail protocol of IHC was described in the Materials and methods section of the main paper. The IHC results of hMLH1, hMSH2 and hMSH6 are shown in left-hand, middle and right-hand panels respectively. The upper panel is the positive staining, and the lower is the negative staining.

Received 16 May 2012/11 September 2012; accepted 1 November 2012

Published as Immediate Publication 1 November 2012, doi: 10.1042/CS20120240

¹ These authors contributed equally to the study and are to be considered as joint first authors.

Correspondence: Dr Yun Yen (email yyen@coh.org).