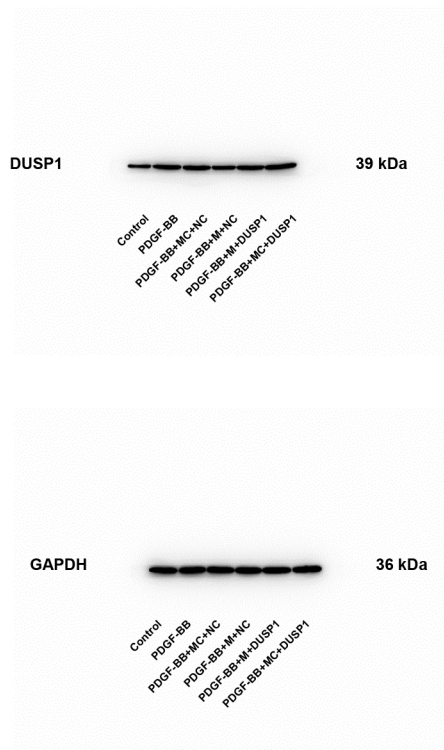


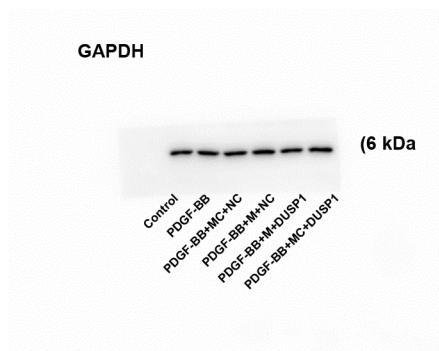
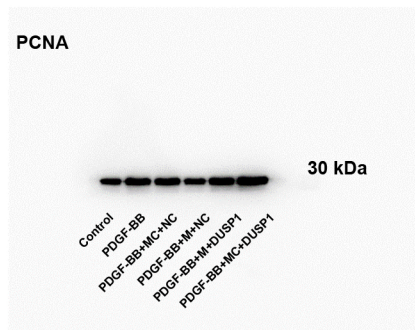
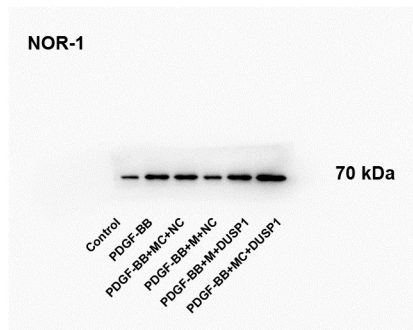
## Supplementary Fig. 1



---

**Supplementary figure 1. Representative blots for western blot experiment in Fig. 4D.** Representative blots showed DUSP1 expression in PDGF-BB-induced PSMCs. GAPDH was used as a loading control. PSMCs, pulmonary artery smooth muscle cells; PDGF-BB, platelet-derived growth factor; Control, without any treatment; NC, negative control for DUSP1 plasmid; M, miR-34s-3p mimic; M, miR-34a-3p mimic; MC, mimic control.

## Supplementary Fig. 2



---

**Supplementary figure 2. Representative blots for western blot experiment in Fig. 5B.** Representative blots showed NOR-1 and PCNA protein expressions in PDGF-BB-induced PSMCs. GAPDH was used as a loading control. PSMCs, pulmonary artery smooth muscle cells; PDGF-BB, platelet-derived growth factor; Control, without any treatment; NC, negative control for DUSP1 plasmid; M, miR-34s-3p mimic; M, miR-34a-3p mimic; MC, mimic control.