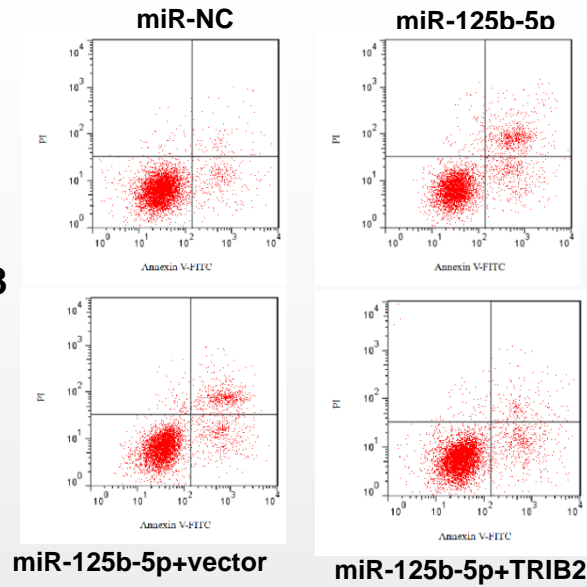
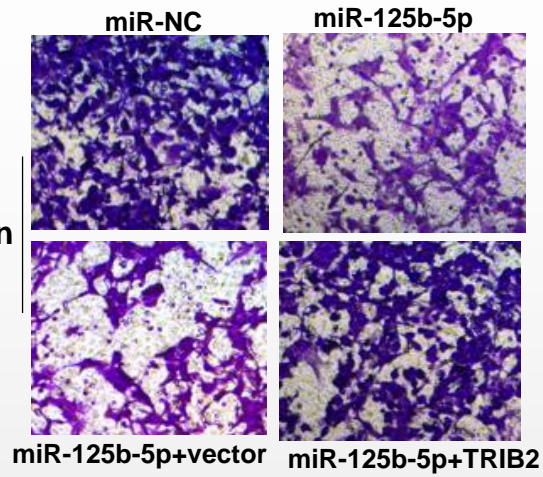


repeat 1

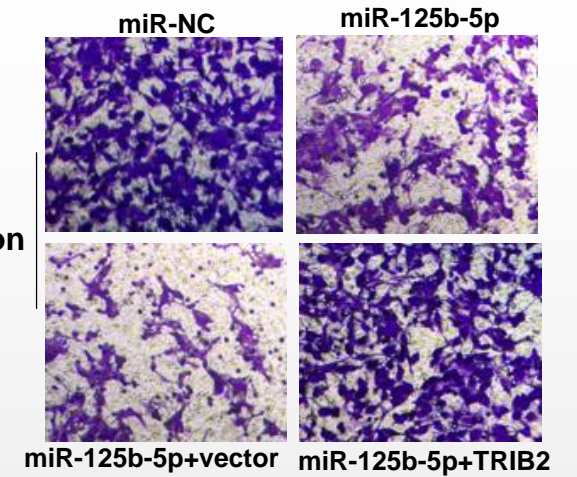
AMC-HN-8



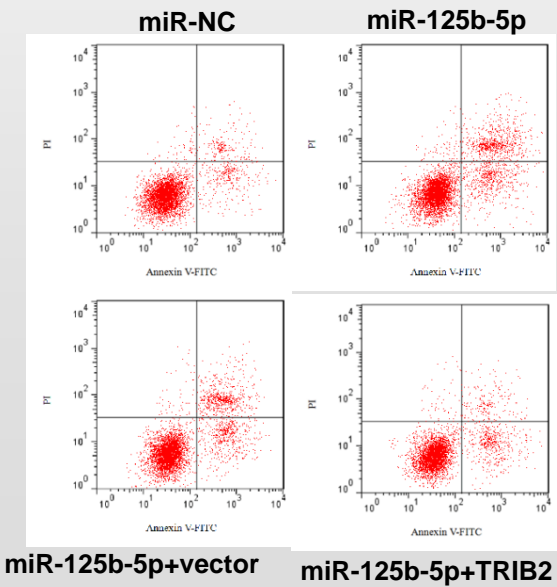
migration



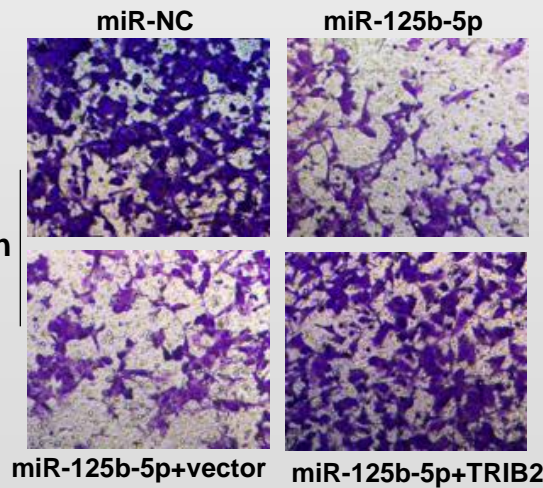
invasion



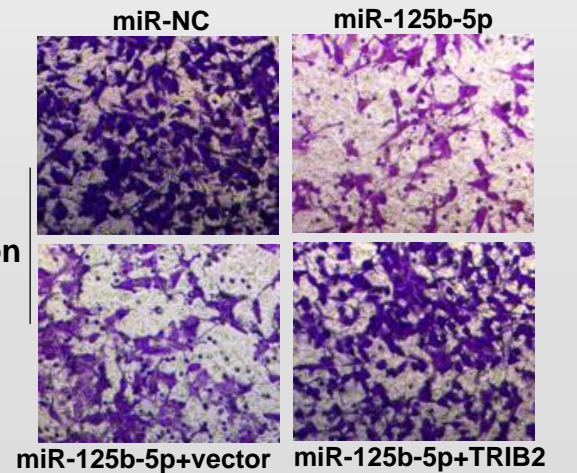
M4E



migration

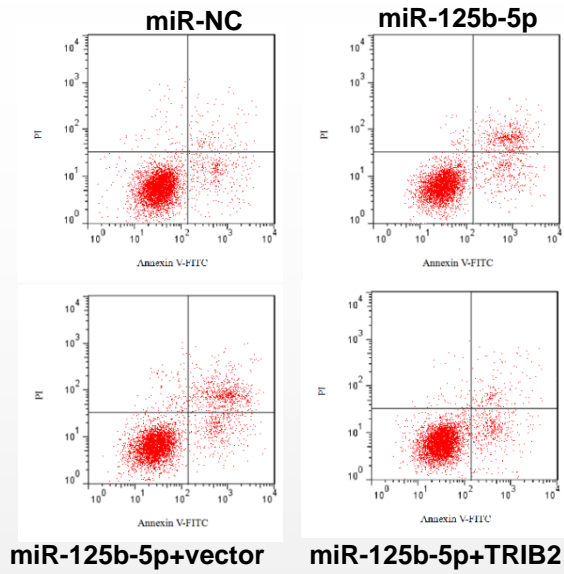


invasion

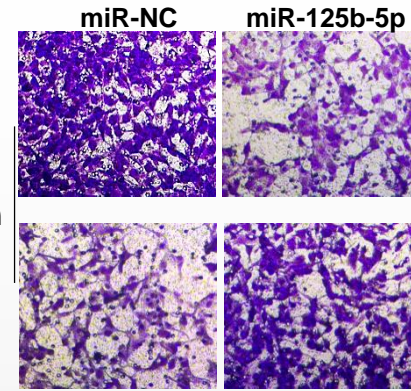


repeat 2

AMC-HN-8

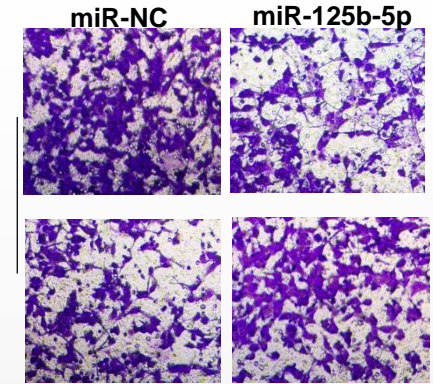


migration



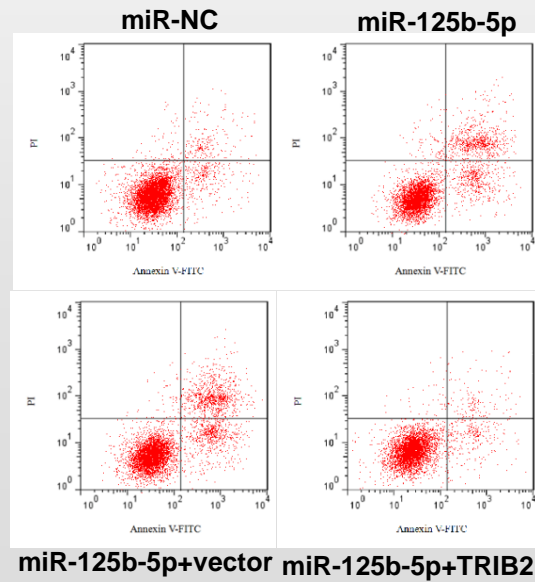
miR-125b-5p+vector miR-125b-5p+TRIB2

invasion

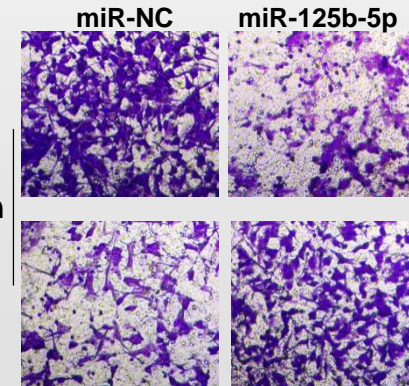


miR-125b-5p+vector miR-125b-5p+TRIB2

M4E

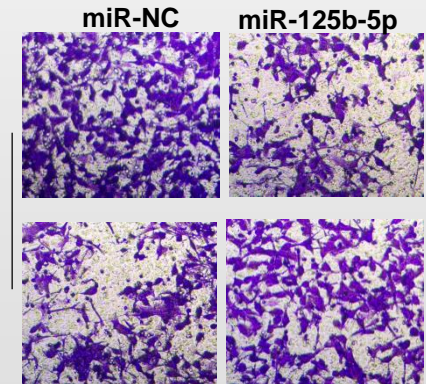


migration



miR-125b-5p+vector miR-125b-5p+TRIB2

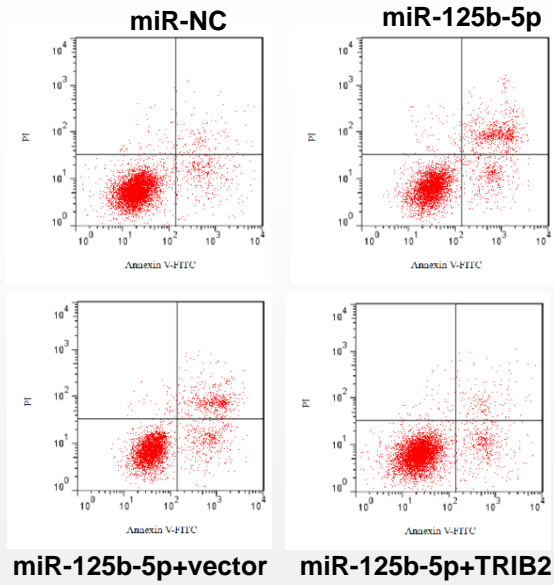
invasion



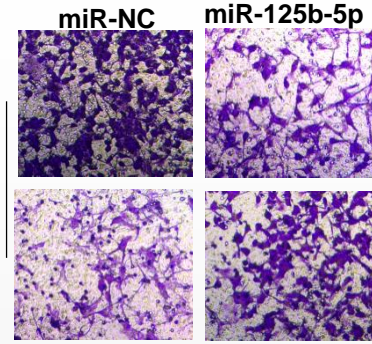
miR-125b-5p+vector miR-125b-5p+TRIB2

repeat 3

AMC-HN-8

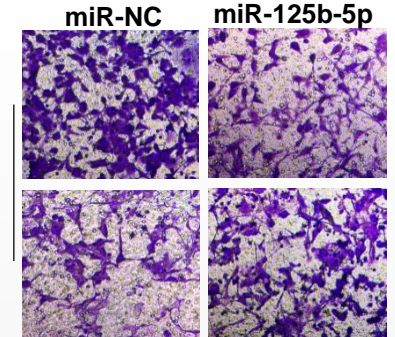


migration



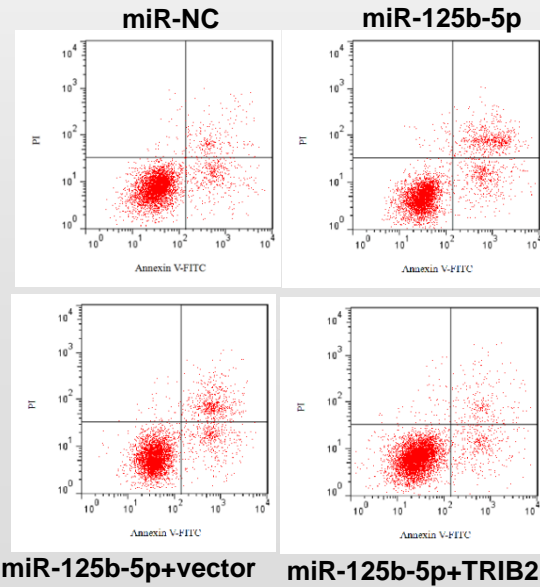
miR-125b-5p+vector miR-125b-5p+TRIB2

invasion

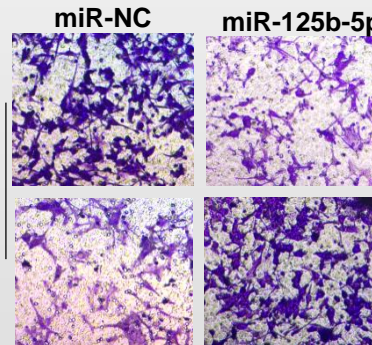


miR-125b-5p+vector miR-125b-5p+TRIB2

M4E

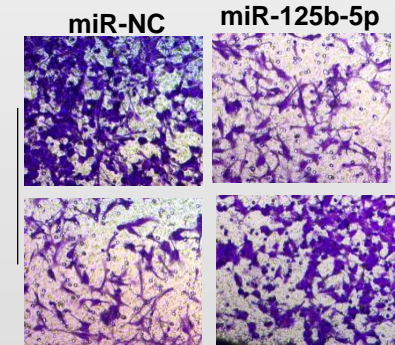


migration



miR-125b-5p+vector miR-125b-5p+TRIB2

invasion



miR-125b-5p+vector miR-125b-5p+TRIB2

Supplementary Figure 1 MiR-125b-5p depletion attenuated the promoting effect of XIST intervention on the apoptosis and the inhibitory impact on the metastasis of LSCC cells.

Notes: LSCC cells were transfected with si-NC, si-XIST, si-XIST + anti-miR-NC or si-XIST + anti-miR-125b-5p. **(A and B)** Flow cytometry was conducted to detect the apoptosis of LSCC cells. **(C and D)** Transwell assay was applied to measure the metastasis of LSCC cells.

* $P < 0.05$.

Supplementary Figure 2 MiR-125b-5p promoted the apoptosis while inhibited the metastasis of LSCC cells via targeting TRIB2.

Notes: MiR-NC, miR-125b-5p, miR-125b-5p+vector or miR-125b-5p+TRIB2 vector was separately transfected into AMC-HN-8 and M4E cells. **(A and B)** Flow cytometry was performed to measure the apoptosis of LSCC cells. **(C and D)** Transwell assay was conducted to detect the metastasis of LSCC cells. * $P < 0.05$.