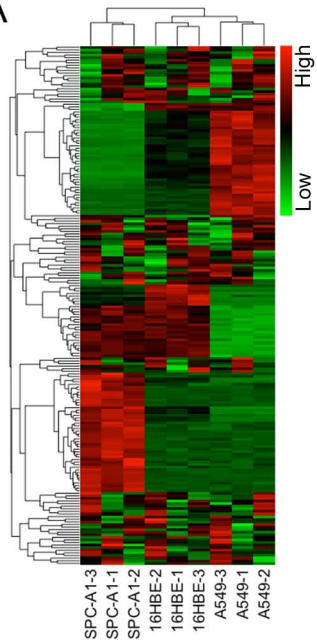


Figure S1: (A) LINC00461 expressions in NSCLC tissues at I-II and III-IV stages. (B) Knockdown of LINC00461 was conducted via shRNAs targeting LINC00461. (C) Effect of shLINC00461 on EMT process was evaluated via immunofluorescence. (D) FISH assay was performed to determine LINC00461 subcellular localization. ** $P < 0.01$.

A



B

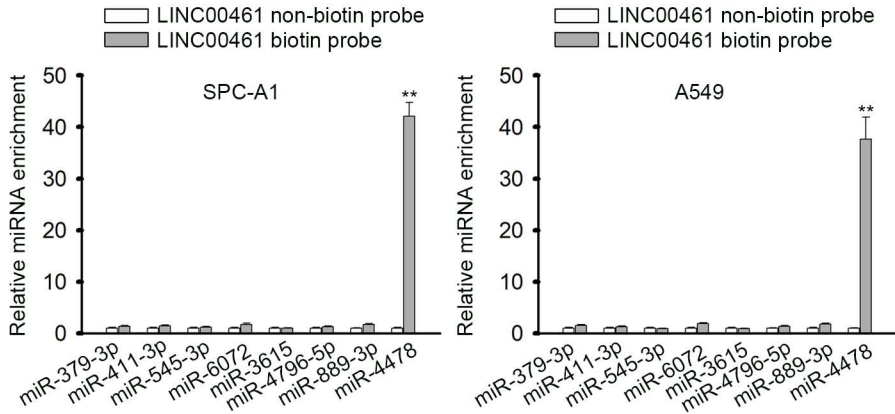


Figure S2: (A) 200 miRNAs with higher LINC00461-binding score were obtained from DIANA-lncBase. RT-qPCR examined the expression of these miRNAs in NSCLC cell lines and 16HBE cell line. (B) RNA pull-down assay examined the interaction between LINC00461 and eight down-regulated miRNAs in NSCLC. ** P < 0.01.