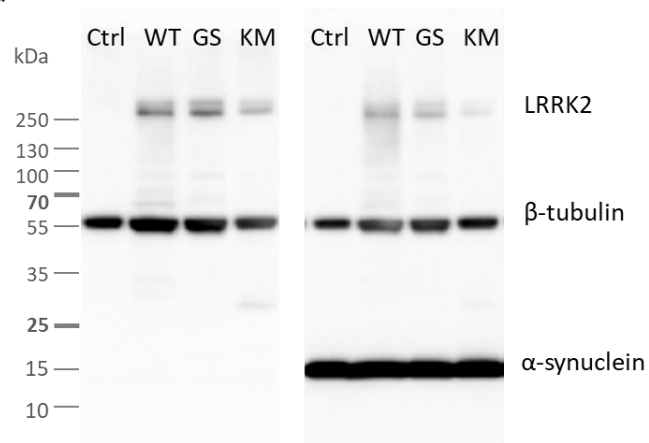


Figure S1 LRRK2 overexpression in stable selected SH-SY5Y cell lines. Immunoblotting showing overexpression of 3flag-LRRK2 WT, G2019S or K1906M or eGFP as a control. The full length blot with LRRK2 detection is shown on the left, subsequent β -tubulin detection on the right.

a



b

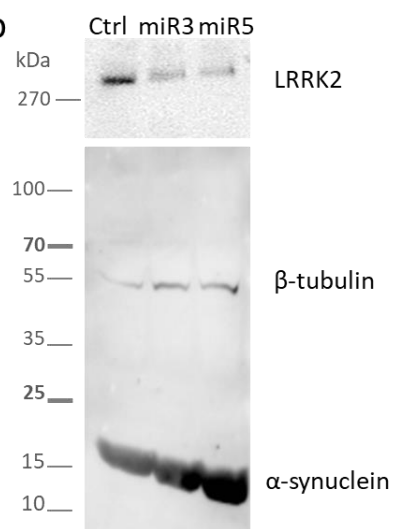


Figure S2 Alpha-synuclein overexpression combined with LRRK2 overexpression or knock down in stable double selected SH-SY5Y cell lines. a. Immunoblotting showing overexpression of 3flag-LRRK2 WT, G2019S or K1906M or eGFP as a control. The full length blot with LRRK2 and β -tubulin detection is shown on the left, subsequent α -synuclein detection on the right. **b.** LRRK2 knock down using two different miRNA-based short hairpin sequences. A short hairpin sequence against firefly luciferase is included as negative control.