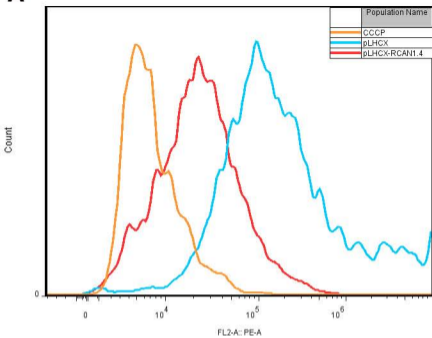
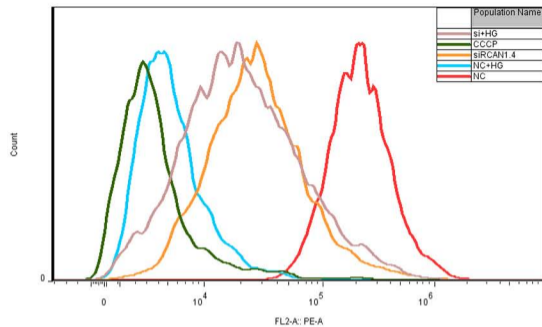
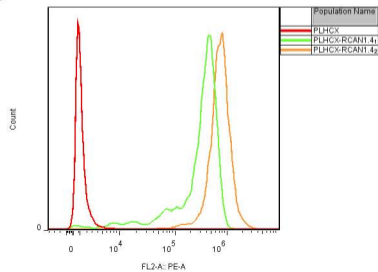
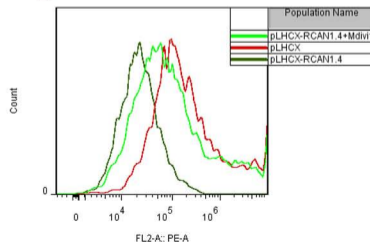
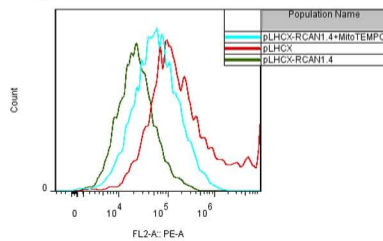


A**C****B****D****E**

Supplementary Figure Legends

Fig.1 Flow cytometry analysis of mitochondrial membrane potential ($\Delta\Psi_m$) and mitochondrial reactive oxygen species (mtROS). Representative graphs of fluorescence intensity (TMRM: excitation/emission 543/580 nm, MitoSOX Red: excitation/emission 510/590 nm) were shown. A: MCs was transfected by pLHCX-RCAN1.4 or empty vector, $\Delta\Psi_m$ was evaluated by TMRM staining with CCCP as positive control. B: MCs was transfected by pLHCX-RCAN1.4 for 24h (1) or 48 h (2), and then mtROS was evaluated by MitoSOX Red staining. C: After negative control (NC) or RCAN1.4 siRNA transfection for 36 h, MCs were incubated with HG for 24 h. $\Delta\Psi_m$ was evaluated by TMRM staining with CCCP as positive control. D, E: MCs were pretreated with Mdivi-1 or MitoTEMPO, followed by transfection with pLHCX-RCAN1.4 or empty vector for 24 h. $\Delta\Psi_m$ was evaluated by TMRM staining.