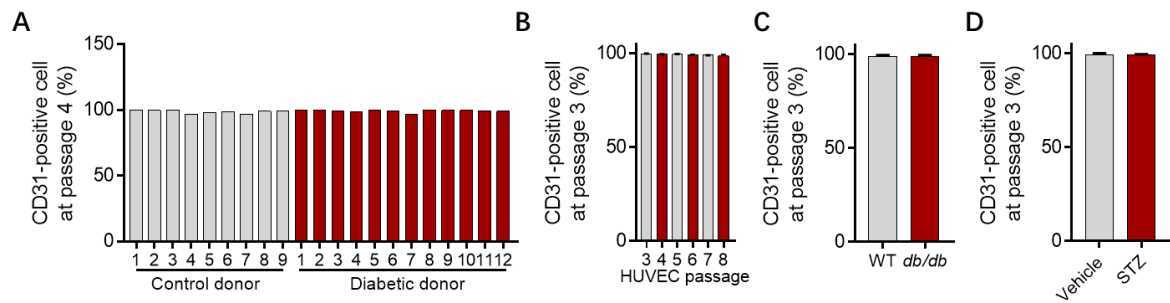
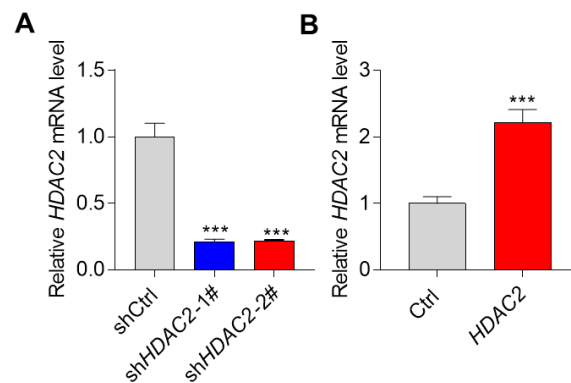


Supplementary Data

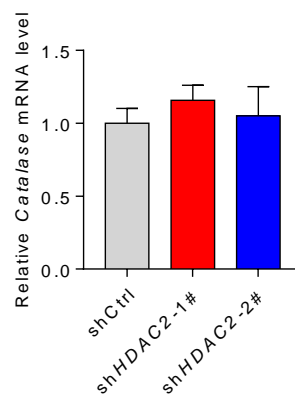


Supplementary Figure 1 CD31-positive cell of isolated endothelial cells.

- (A) CD31-positive cell at passage 4 of endothelial cells isolated from control and diabetic donors (Related to Figure 1A).
- (B) CD31-positive cell at passage 3-8 of HUVEC used in this study.
- (C) CD31-positive cell at passage 3 of endothelial cells isolated from control and diabetic mice (Related to Figure 1B).
- (D) CD31-positive cell at passage 3 of endothelial cells isolated from control and diabetic mice (Related to Figure 1C).

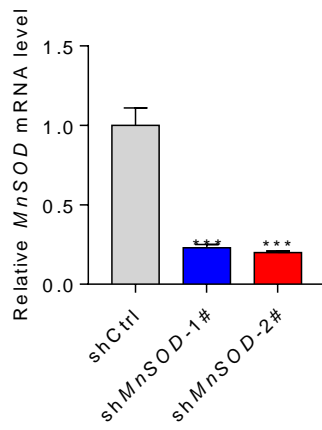


Supplementary Figure 2 HDAC2 mRNA knockdown and overexpression in HUVEC (Related to Figure 2A and E). *** $p < 0.01$ vs. shCtrl or Ctrl by one-way ANOVA followed by Bonferroni *post hoc* multiple comparisons tests or Student's t test.



Supplementary Figure 3 HDAC2 did not change the expression of Catalase. HUVECs were infected with a retrovirus carrying shRNA targeting HDAC2 for 48 hours, then the

mRNA and protein levels were analyzed.



Supplementary Figure 4 MnSOD mRNA knockdown in HUVEC (Related to Figure 4F).

*** $p < 0.01$ vs. shCtrl by one-way ANOVA followed by Bonferroni *post hoc* multiple comparisons tests.