

Supplementary Figure 1. H&E staining and PAS injury scores in acute kidney injury.

Animal models of acute kidney injury were induced as described in methods. A: Representative images of renal sections stained with H&E. Original magnification: x200. B: Quantification of the tubular injury. Data represent means \pm SEM. ***P<0.001 either versus control.

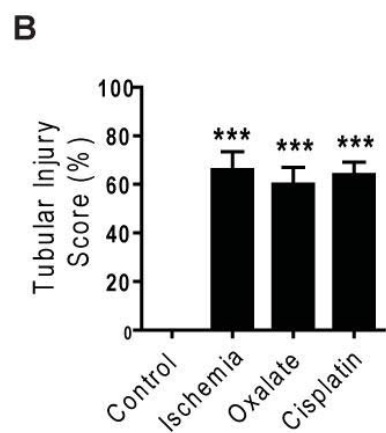
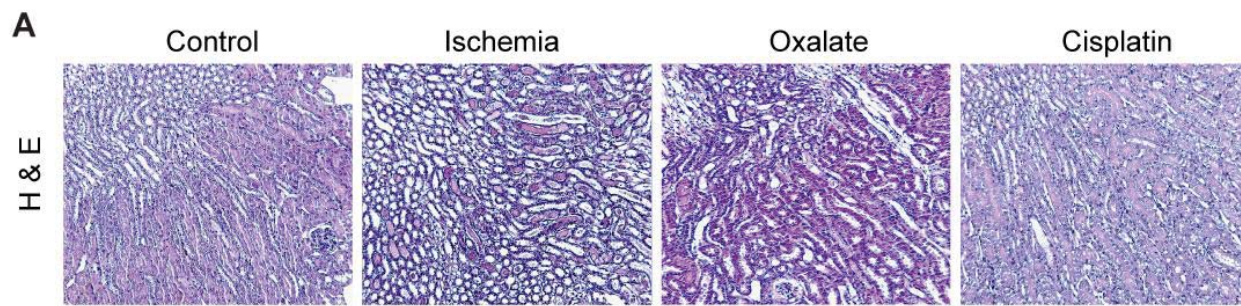
Supplementary Figure 2. RIPK3, collagen-1 α 1 expression and quantification of injury during kidney remodeling in murine chronic oxalate nephropathy.

Chronic oxalate nephropathy was induced in mice as described in methods. A: Representative images of renal sections stained with RIPK3 at day 0, 7, 14 and 21. Original magnification: x100. B: Representative images of renal sections stained with collagen-1 α 1 at day 0, 7, 14 and 21. Original magnification: x200. C: PAS injury score as described in methods. Data represent means \pm SEM. ***P<0.001 either versus day 0.

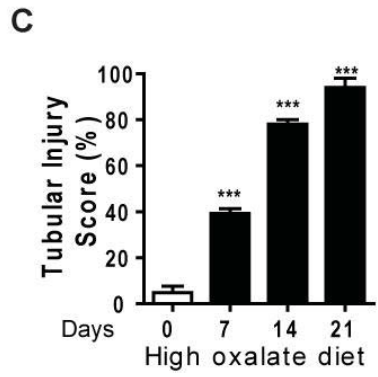
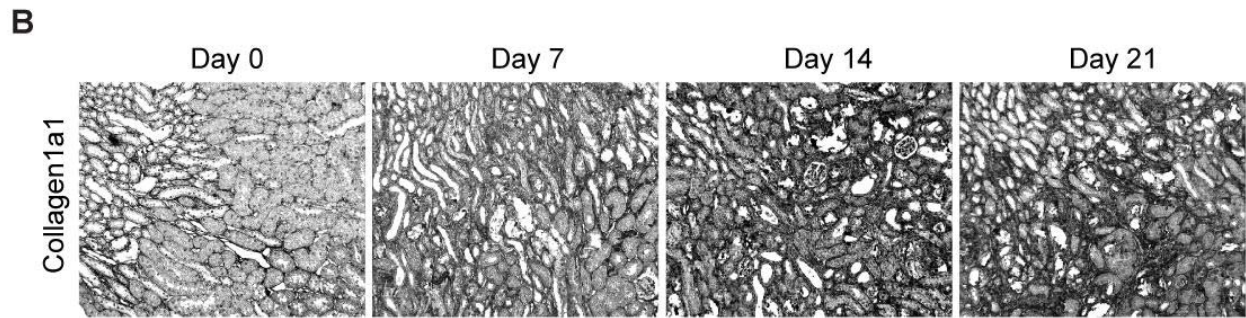
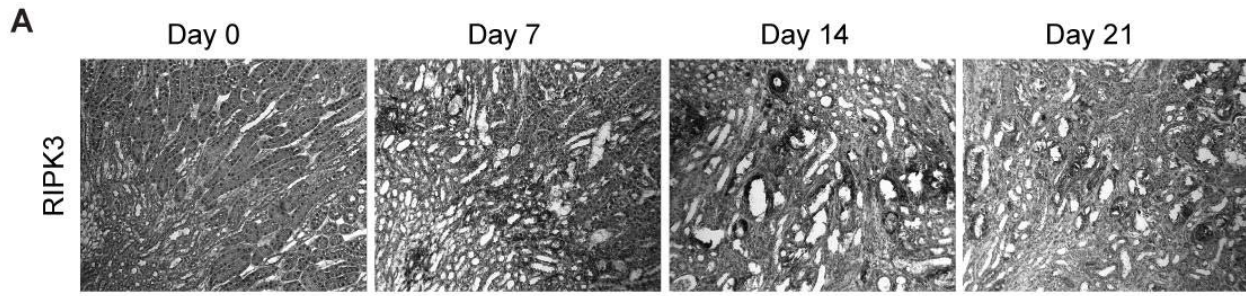
Supplementary Figure 3. RIPK3, Collagen-1 α 1 expression and quantification of injury during kidney remodeling in murine chronic kidney disease after ischemia-reperfusion injury.

Chronic kidney disease after unilateral renal pedicle clamping was induced in mice as described in methods. A: Representative images of renal sections stained with RIPK3 at day 5, 10 and 35. Original magnification: x100. B: Representative images of renal sections stained with collagen-1 α 1 at day 5, 10 and 35. Original magnification: x200. C: PAS injury score as described in methods. Data represent means \pm SEM. **P<0.01, ***P<0.001 either versus day 0.

Supplementary Figure 1

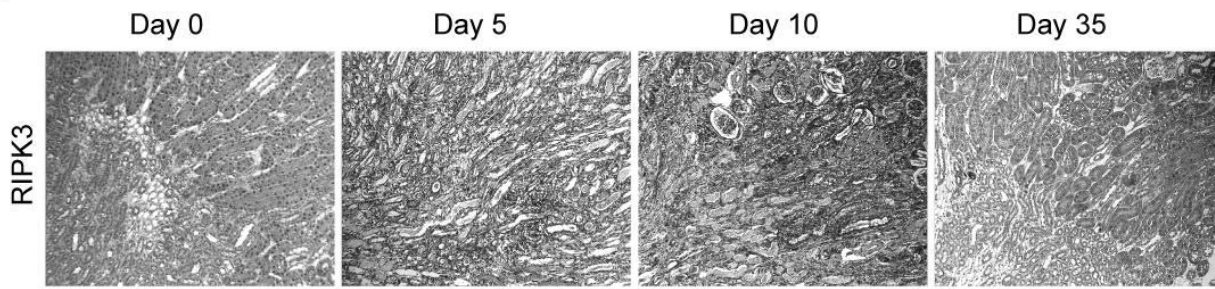


Supplementary Figure 2

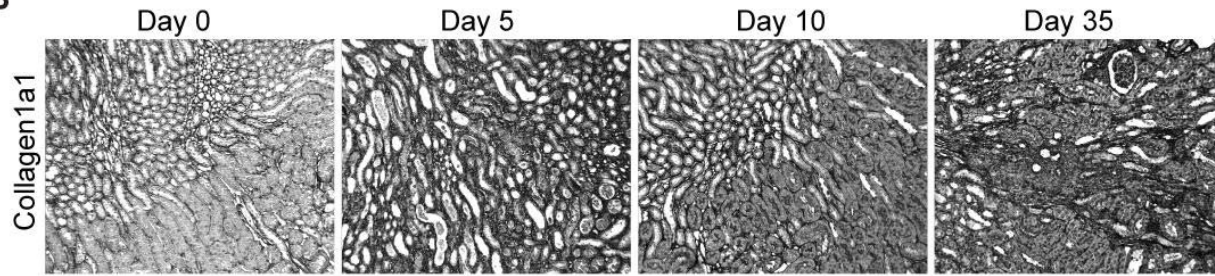


Supplementary Figure 3

A



B



C

