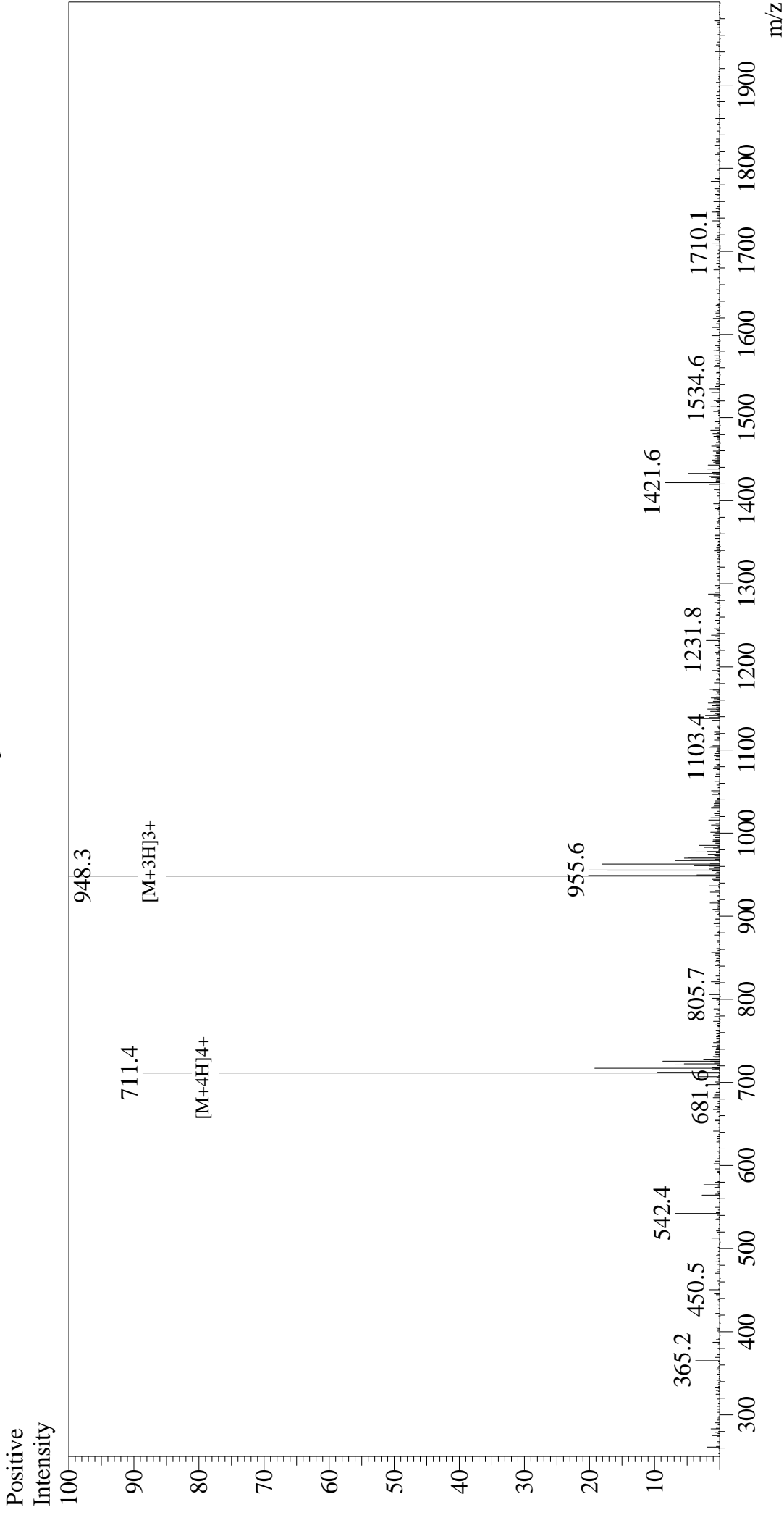


# Mass Spectrum



## Sample Information

Acquired by : Gary  
 Month-Day Processed : 11/28/19  
 Time Processed : 21:12:58  
 Injection Volume : 0.3  
 Sample Name : hs\_Beclin  
 Sample ID : U4406EK070-1  
 Theoretical MW : 2842.18  
 Observed MW : 2841.9

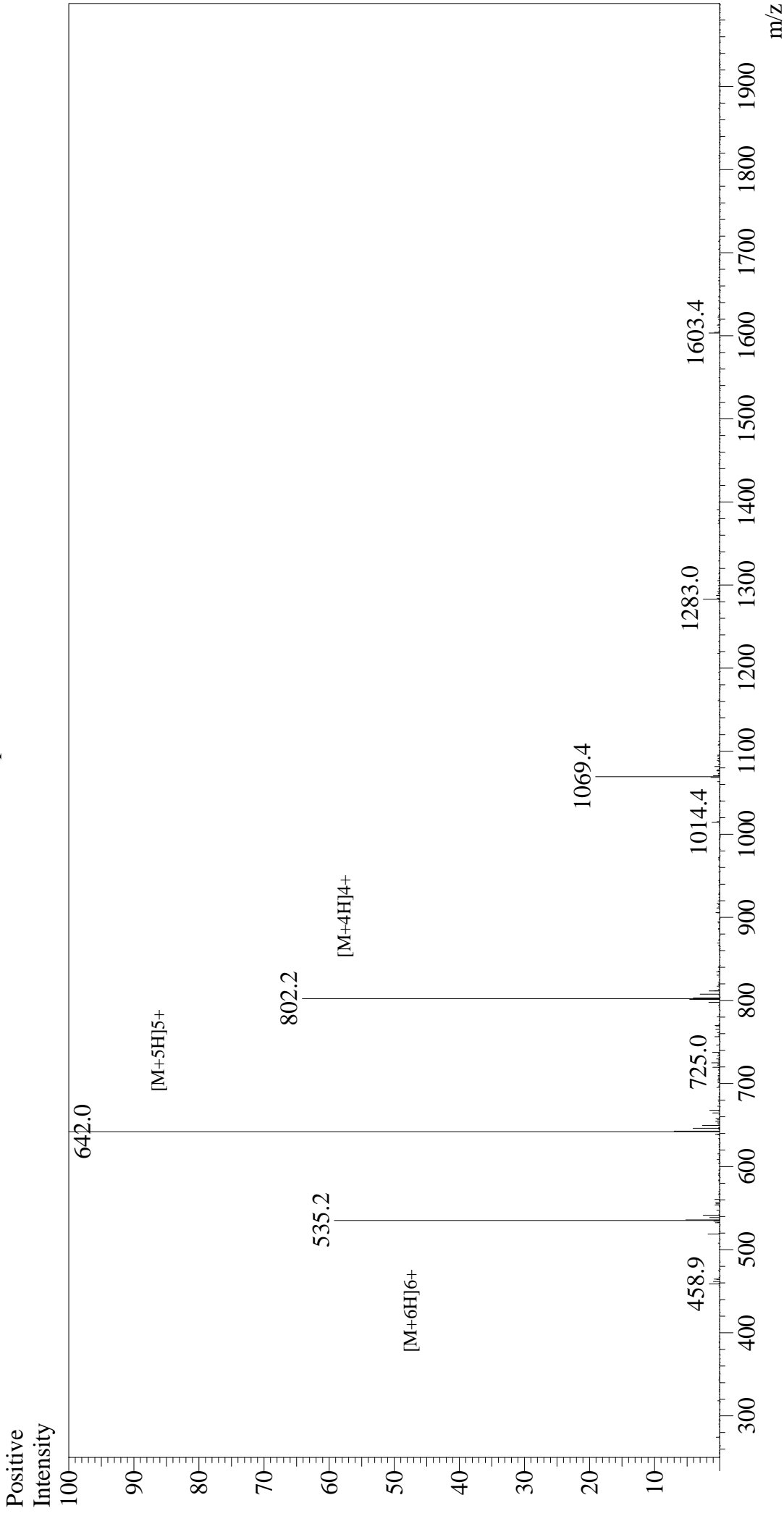
## Interface

Interface : ESI  
 Nebulizing Gas Flow : 1.5L/min  
 CDL Temp : 250  
 Block Temp : 200

## Equipment

Equipment : GK11010007  
 Interface Bias : +4.5 kV  
 Drying Gas Flow : 5 L/min  
 T.Flow : 0.2 ml/min  
 B.conc : 50% H2O/50% MeOH

# Mass Spectrum



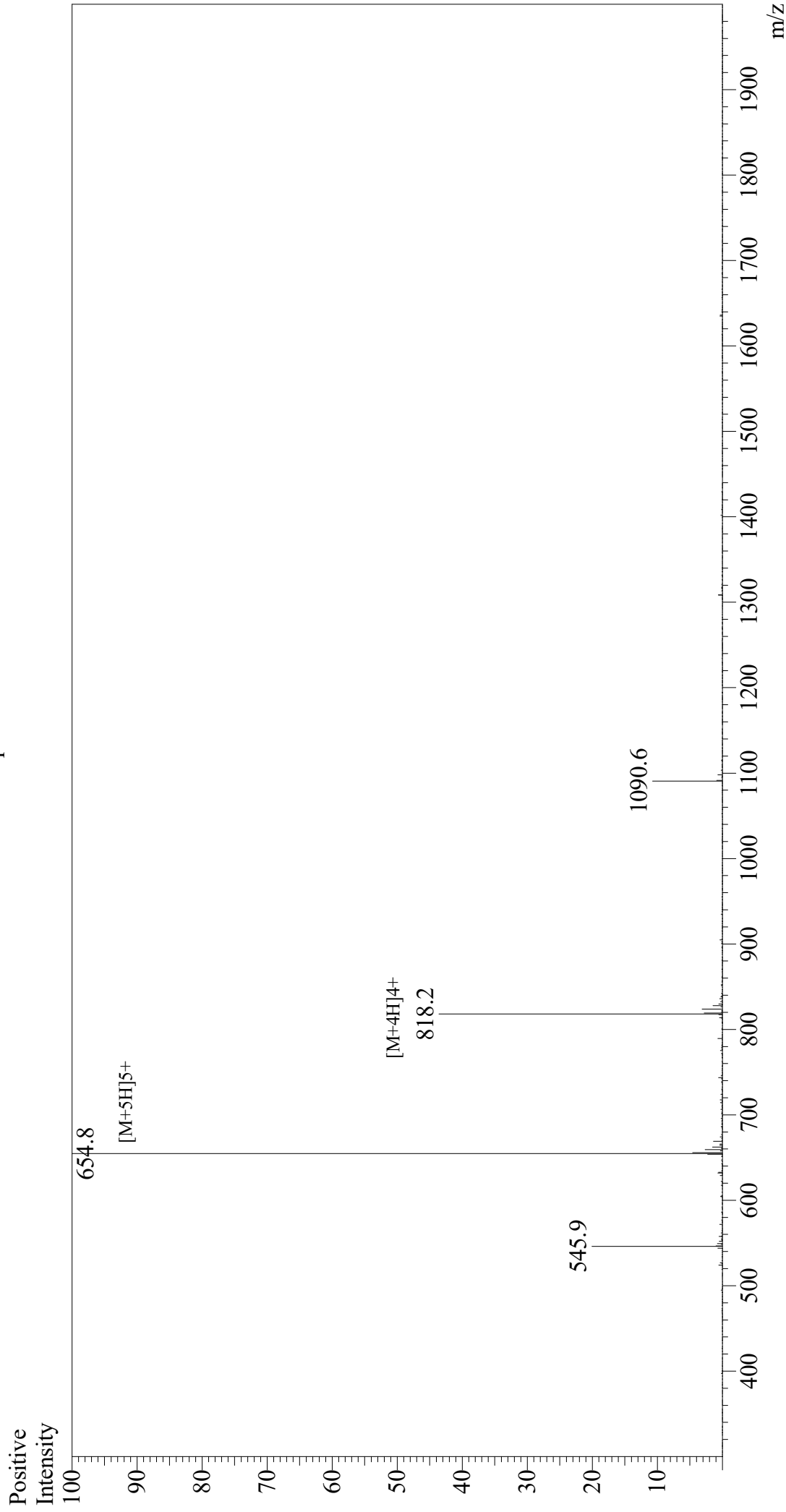
## Sample Information

Acquired by : Gary  
Month-Day Processed : 03/24/20  
Time Processed : 10:51:43  
Injection Volume : 0.3  
Sample Name : HS\_Puma  
Sample ID : U6608FC030-1  
Theoretical MW : 3205.50  
Observed MW : 3205.0

Interface : ESI  
Nebulizing Gas Flow : 1.5L/min  
CDL Temp : 250  
Block Temp : 200

Equipment : GK11010007  
Interface Bias : +4.5 kV  
Drying Gas Flow : 5 L/min  
T.Flow : 0.2 ml/min  
B.conc : 50% H<sub>2</sub>O/50% MeOH

# Mass Spectrum



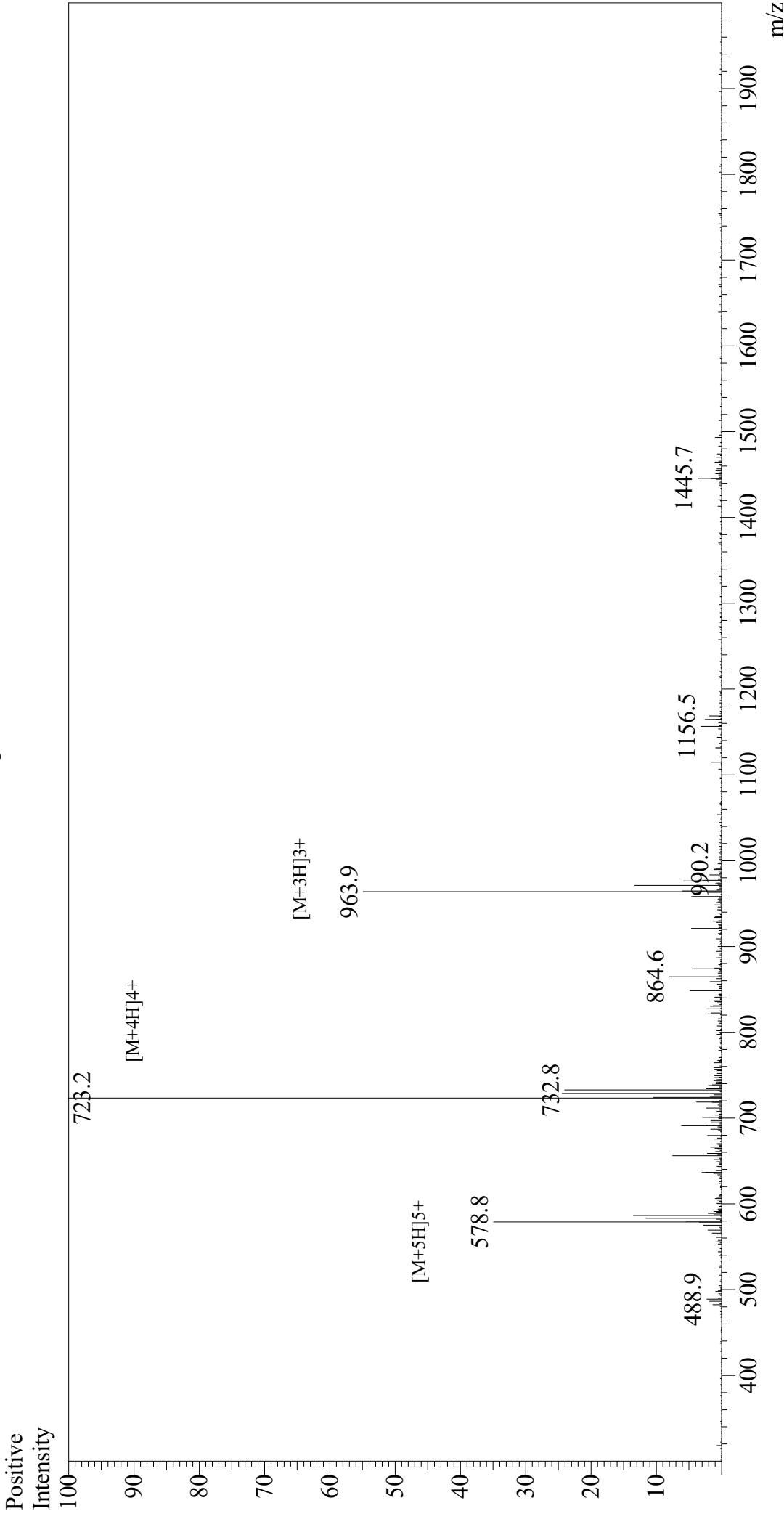
## Sample Information

Acquired by : Gary  
Month-Day Processed : 03/17/20  
Time Processed : 12:10:53 PM  
Injection Volume : 0.3  
Sample Name : HS\_Bim  
Sample ID : U6608FC030-3  
Theoretical MW : 3269.67  
Observed MW : 3269.0

Interface : ESI  
Nebulizing Gas Flow : 1.5L/min  
CDL Temp : 250  
Block Temp : 200

Equipment : GK11010007  
Interface Bias : +4.5 kV  
Drying Gas Flow : 5 L/min  
T.Flow : 0.2 ml/min  
B.conc : 50% H2O/50% MeOH

# Mass Spectrum



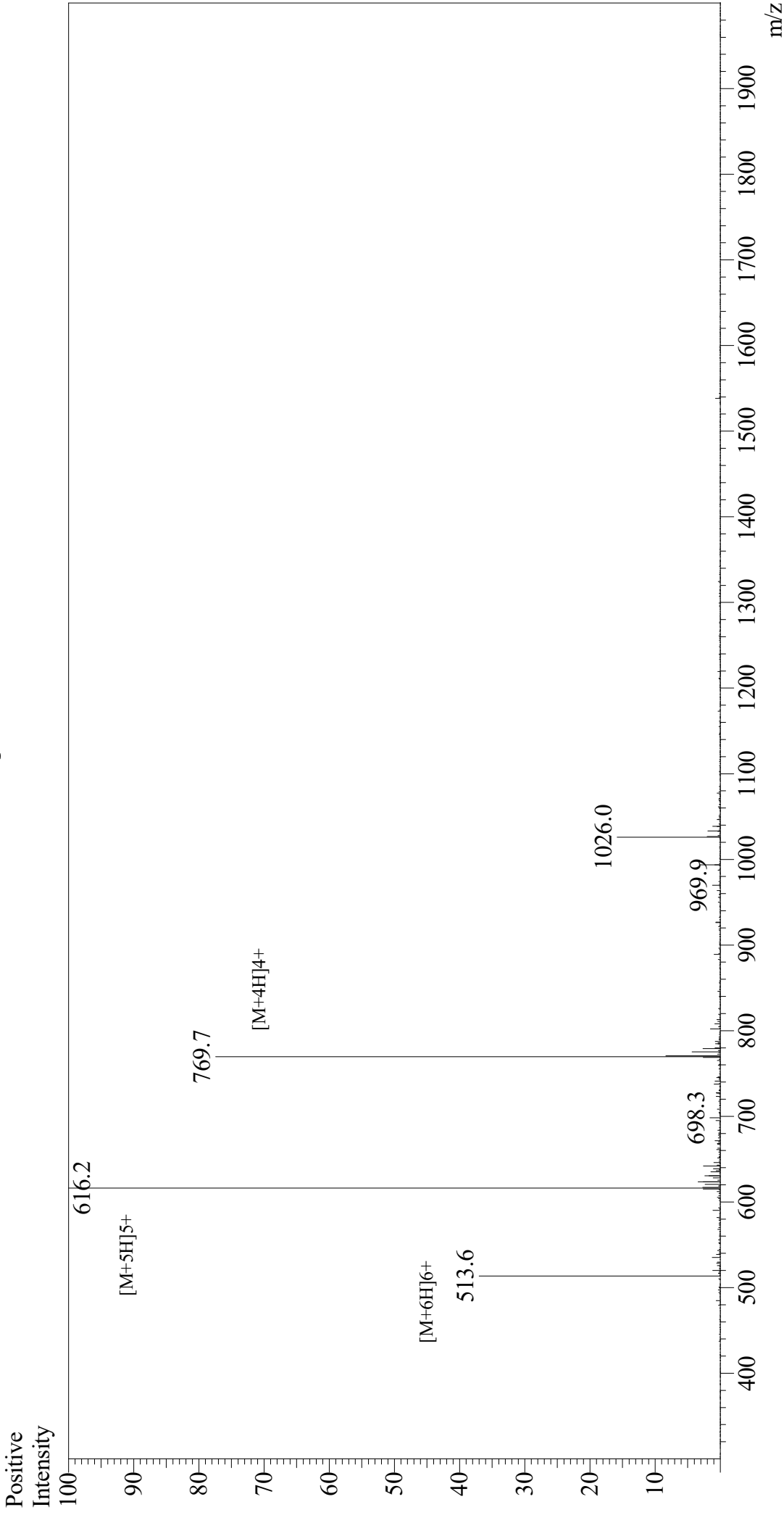
## Sample Information

Acquired by : Gary  
Month-Day Processed : 03/22/20  
Time Processed : 10:54:05 AM  
Injection Volume : 0.3  
Sample Name : HS\_Bid  
Sample ID : U6608FC030-5  
Theoretical MW : 2889.22  
Observed MW : 2888.8

Interface : ESI  
Nebulizing Gas Flow : 1.5L/min  
CDL Temp : 250  
Block Temp : 200

Equipment : GK11010007  
Interface Bias : +4.5 kV  
Drying Gas Flow : 5 L/min  
T.Flow : 0.2 ml/min  
B.conc : 50%H2O/50%MeOH

# Mass Spectrum



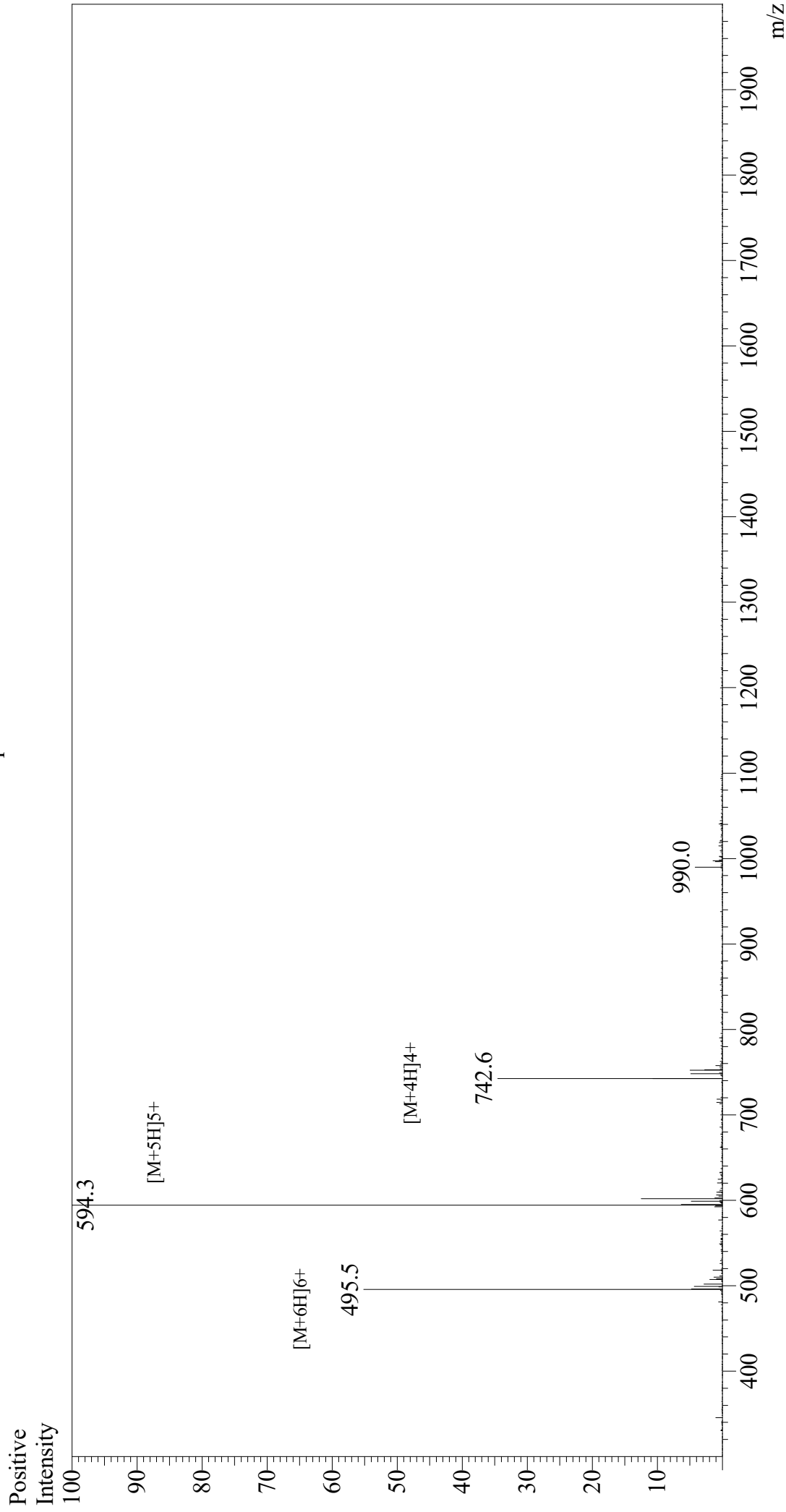
## Sample Information

Acquired by: Gary  
Month-Day Processed: 03/17/20  
Time Processed: 11:57:56 AM  
Injection Volume: 0.3  
Sample Name: HS\_Noxa  
Sample ID: U6608FC030-7  
Theoretical MW: 3075.56  
Observed MW: 3076.0

Interface: ESI  
Nebulizing Gas Flow: 1.5L/min  
CDL Temp: 250  
Block Temp: 200

Equipment: GK11010007  
Interface Bias: +4.5 kV  
Drying Gas Flow: 5 L/min  
T.Flow: 0.2 ml/min  
B.conc: 50% H2O/50% MeOH

# Mass Spectrum



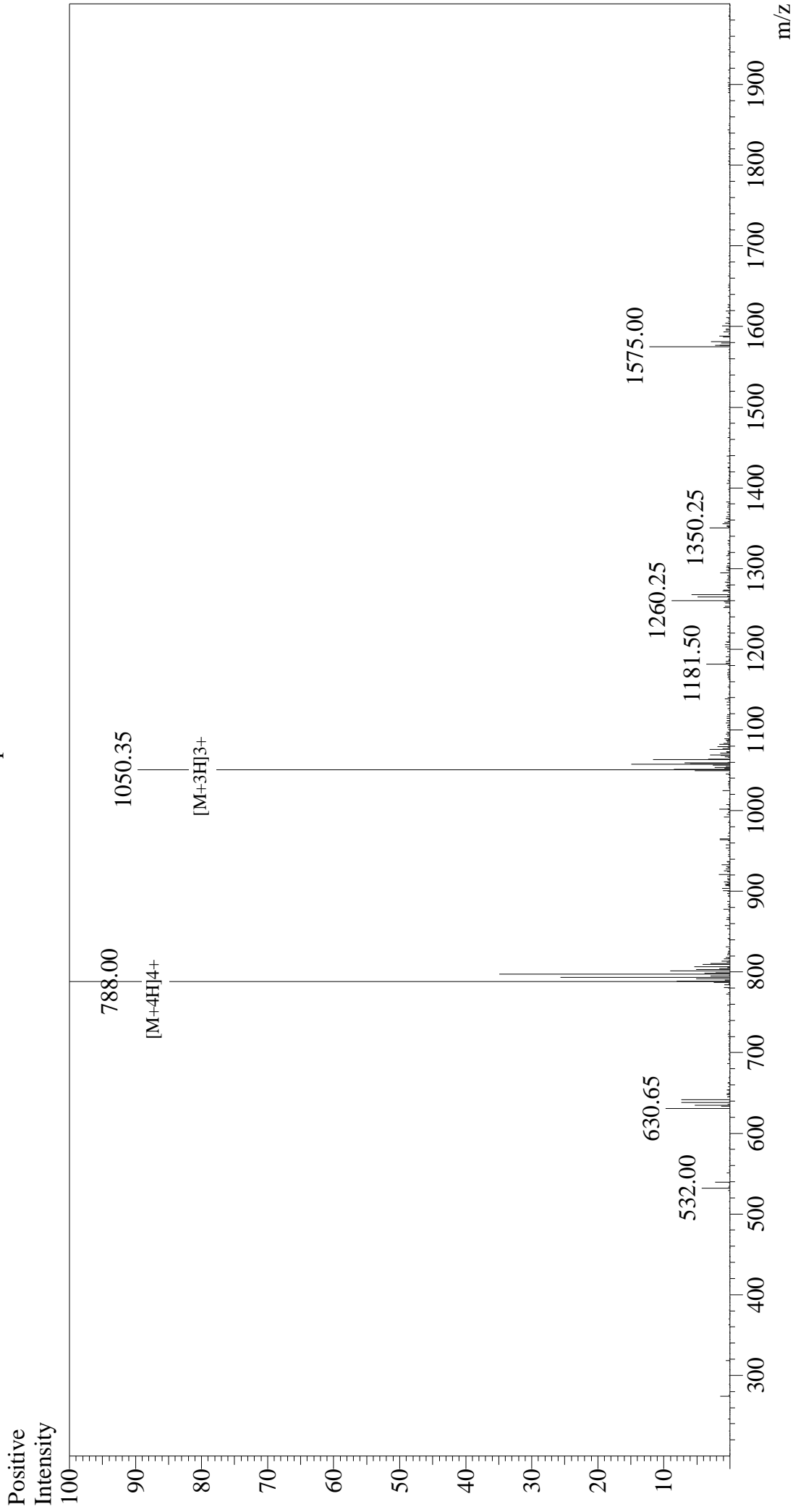
## Sample Information

Acquired by : Gary  
Month-Day Processed : 03/26/20  
Time Processed : 10:40:24 AM  
Injection Volume : 0.3  
Sample Name : HS\_Hrk  
Sample ID : U6608FC030-9  
Theoretical MW : 2967.38  
Observed MW : 2966.5

Interface : ESI  
Nebulizing Gas Flow : 1.5L/min  
CDL Temp : 250  
Block Temp : 200

Equipment : GK11010007  
Interface Bias : +4.5 kV  
Drying Gas Flow : 5 L/min  
T.Flow : 0.2 ml/min  
B.conc : 50% H<sub>2</sub>O/50% MeOH

# Mass Spectrum



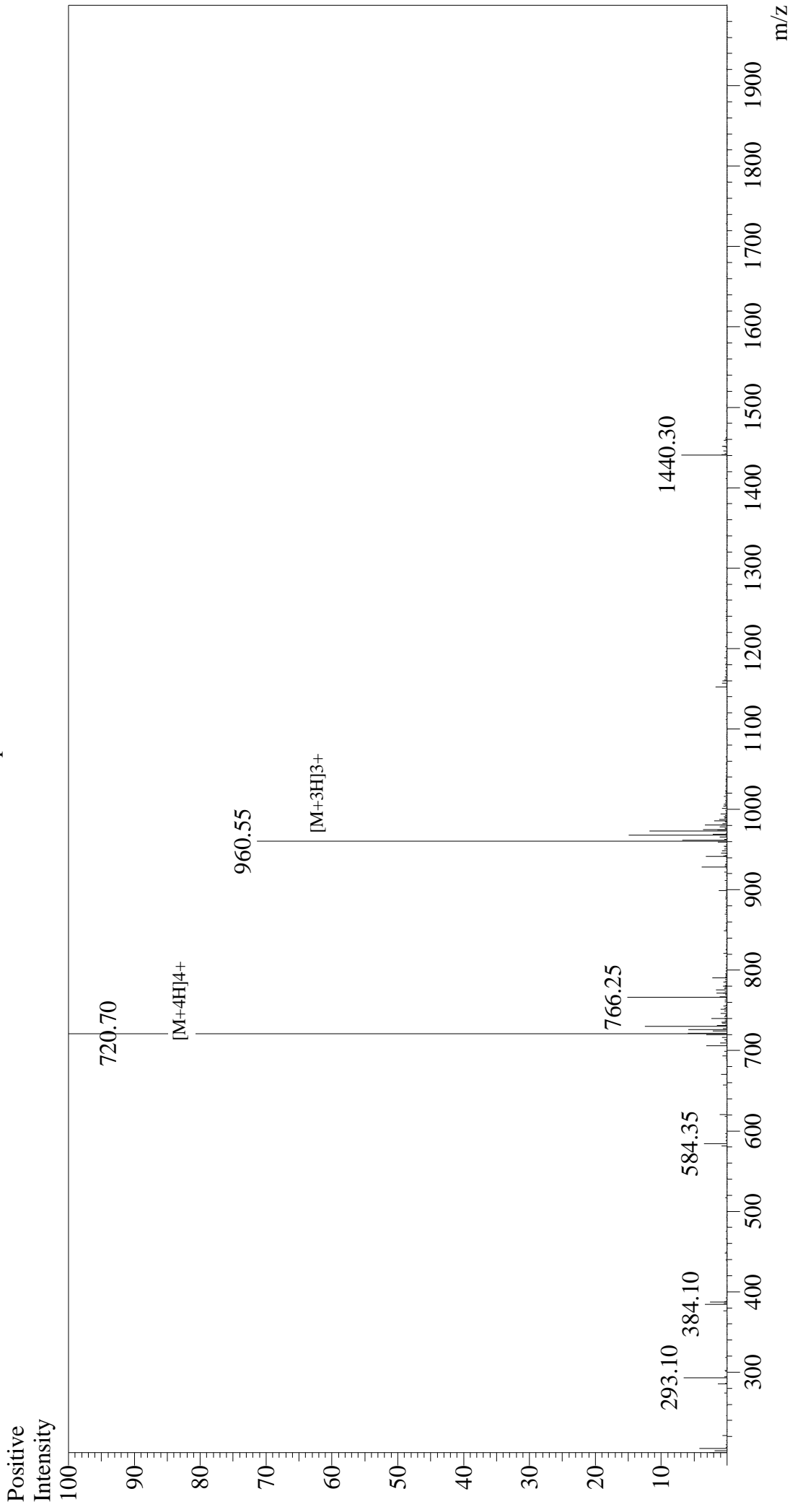
## Sample Information

Acquired by : Gary  
Month-Day Processed : 12/21/14  
Time Processed : 16:31:33  
Injection Volume : 0.2  
Sample Name : hsBax  
Sample ID : 520838-4  
Theoretical MW : 3148.54  
Observed MW : 3148.00

Interface : ESI  
Nebulizing Gas Flow : 1.5L/min  
CDL Temp : 250°C  
Block Temp : 200°C

Interface Bias : +4.5 kV  
Drying Gas Flow : 5 L/min  
T.Flow : 0.2 ml/min  
B.conc : 50%H2O/50%MeOH

# Mass Spectrum



## Sample Information

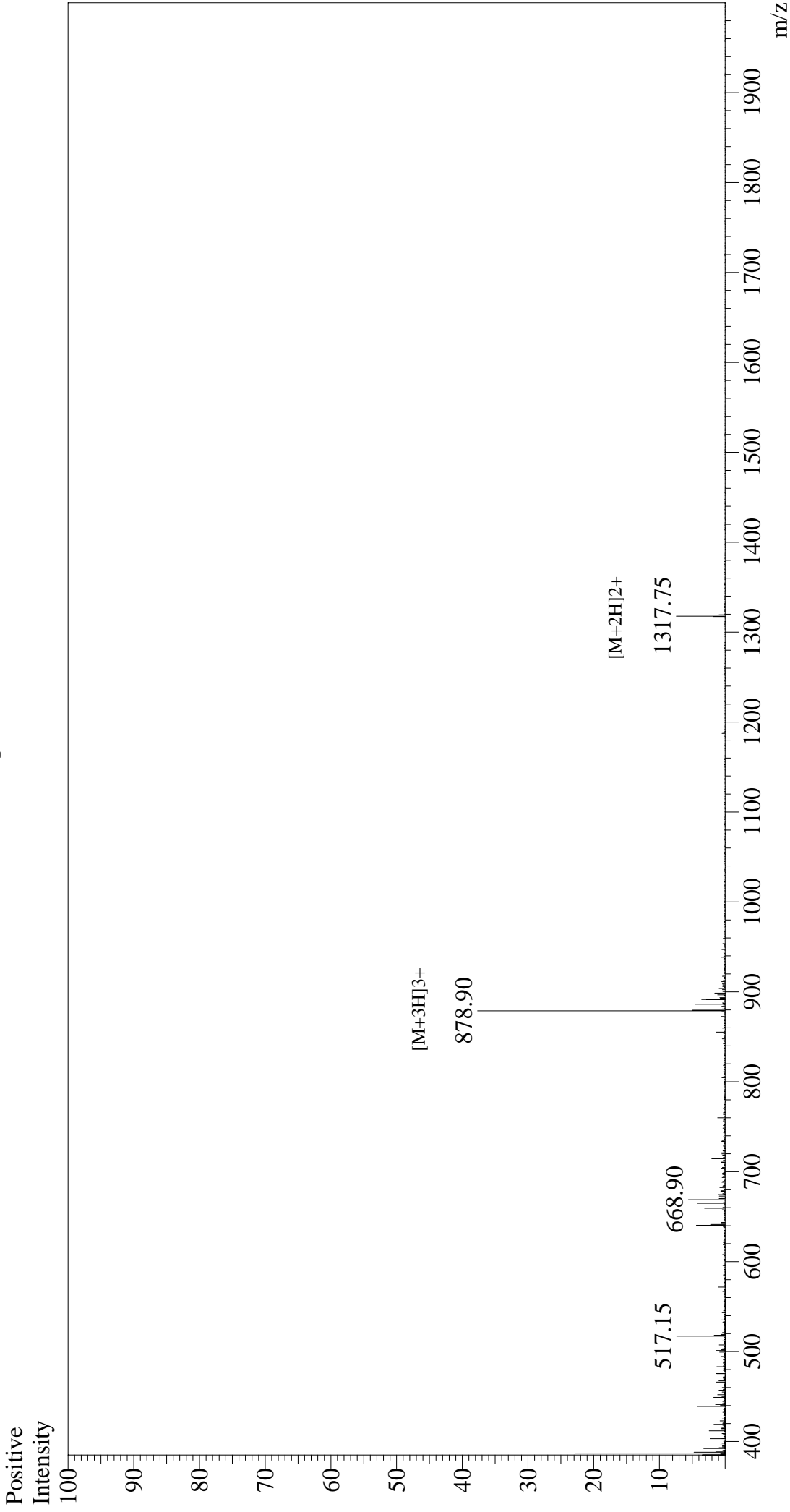
Acquired by : Gary  
Month-Day Processed : 12/03/14  
Time Processed : 15:19:18  
Injection Volume : 0.2  
Sample Name : hsBak  
Sample ID : 520838-7  
Theoretical MW : 2879.14  
Observed MW : 2878.80

Interface : ESI  
Nebulizing Gas Flow : 1.5L/min  
CDL Temp : 250°C  
Block Temp : 200°C

Interface Bias : +4.5 kV  
Drying Gas Flow : 5 L/min  
T.Flow : 0.2 ml/min  
B.conc : 50%H2O/50%MeOH



# Mass Spectrum



## Sample Information

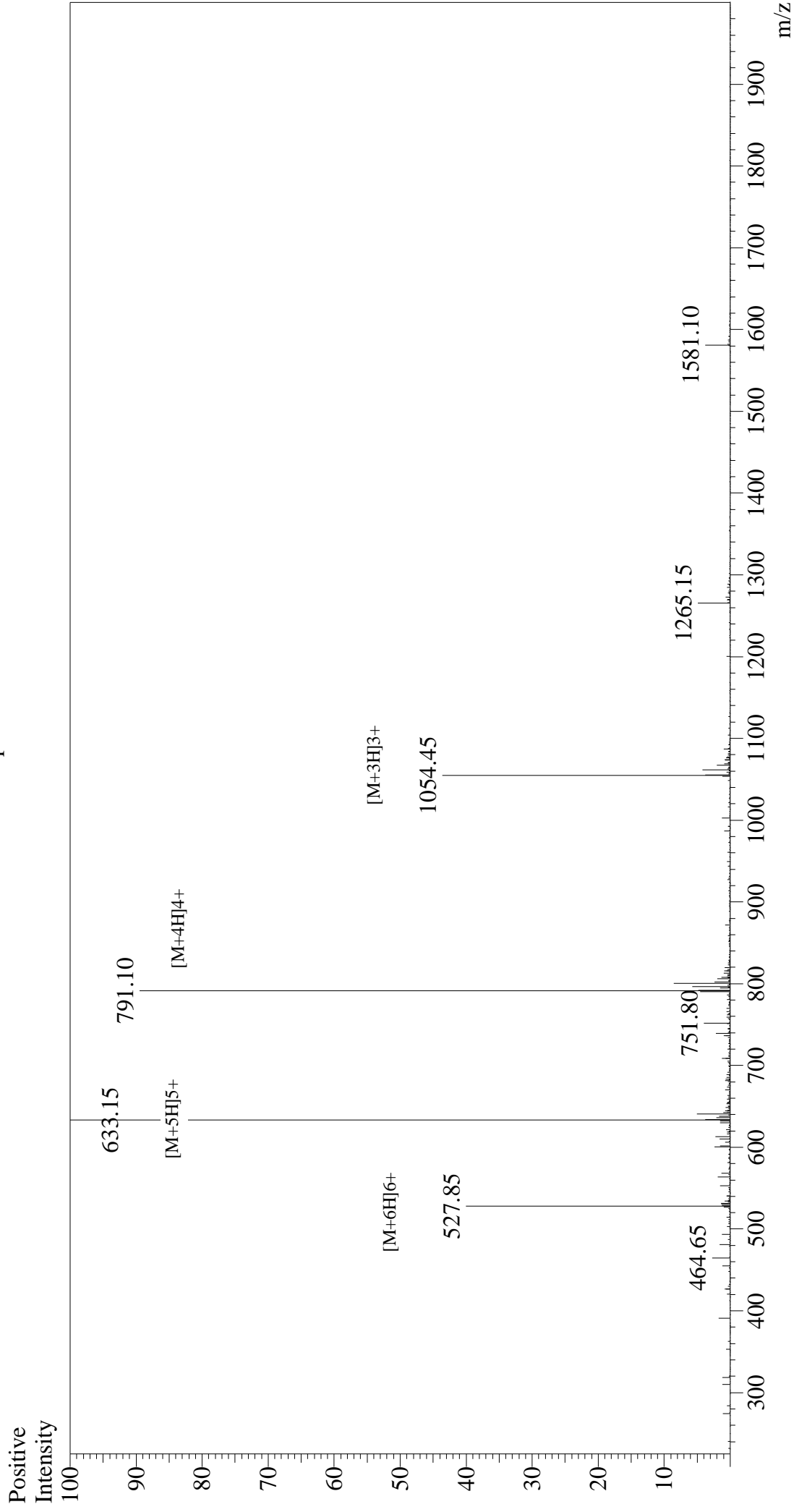
Acquired by : Gary  
Month-Day Processed : 01/15/15  
Time Processed : 10:36:31  
Injection Volume : 0.2  
Sample Name : hsBik  
Sample ID : 529718-7  
Theoretical MW : 2634.03  
Observed MW : 2633.70

Interface : ESI  
Nebulizing Gas Flow : 1.5L/min  
CDL Temp : 250°C  
Block Temp : 200°C

Interface Bias  
Drying Gas Flow  
T.Flow  
B.conc

: +4.5 kV  
: 5 L/min  
: 0.2 ml/min  
: 50%H2O/50%MeOH

# Mass Spectrum



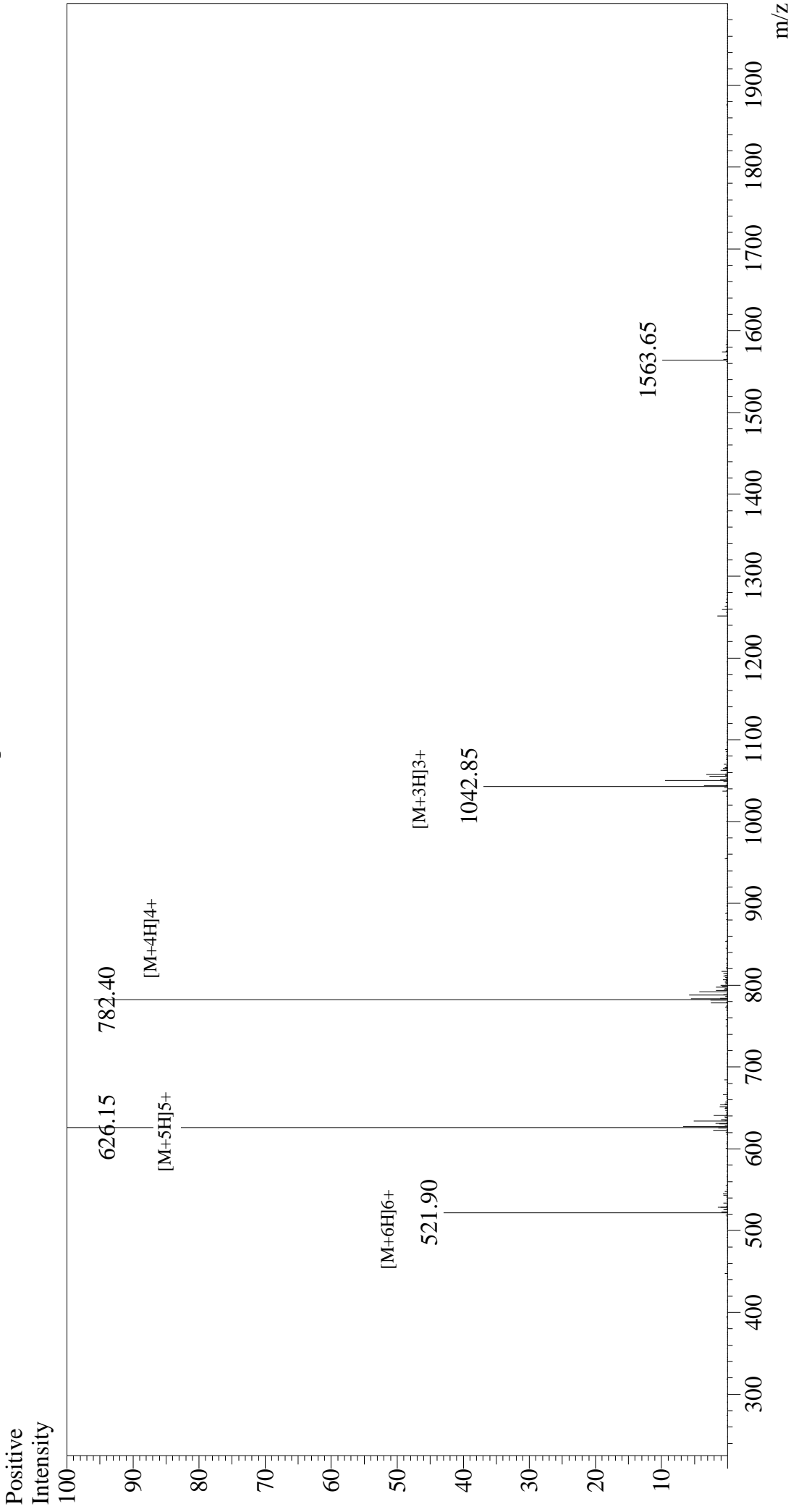
## Sample Information

Acquired by : Gary  
Month-Day Processed : 04/12/15  
Time Processed : 9:27:26  
Injection Volume : 0.2  
Sample Name : hs\_Bad  
Sample ID : 584683-7  
Theoretical MW : 3160.54  
Observed MW : 3160.75

Interface : ESI  
Nebulizing Gas Flow : 1.5L/min  
CDL Temp : 250°C  
Block Temp : 200°C

Interface Bias : +4.5 kV  
Drying Gas Flow : 5 L/min  
T.Flow : 0.2 ml/min  
B.conc : 50%H<sub>2</sub>O/50%MeOH

# Mass Spectrum



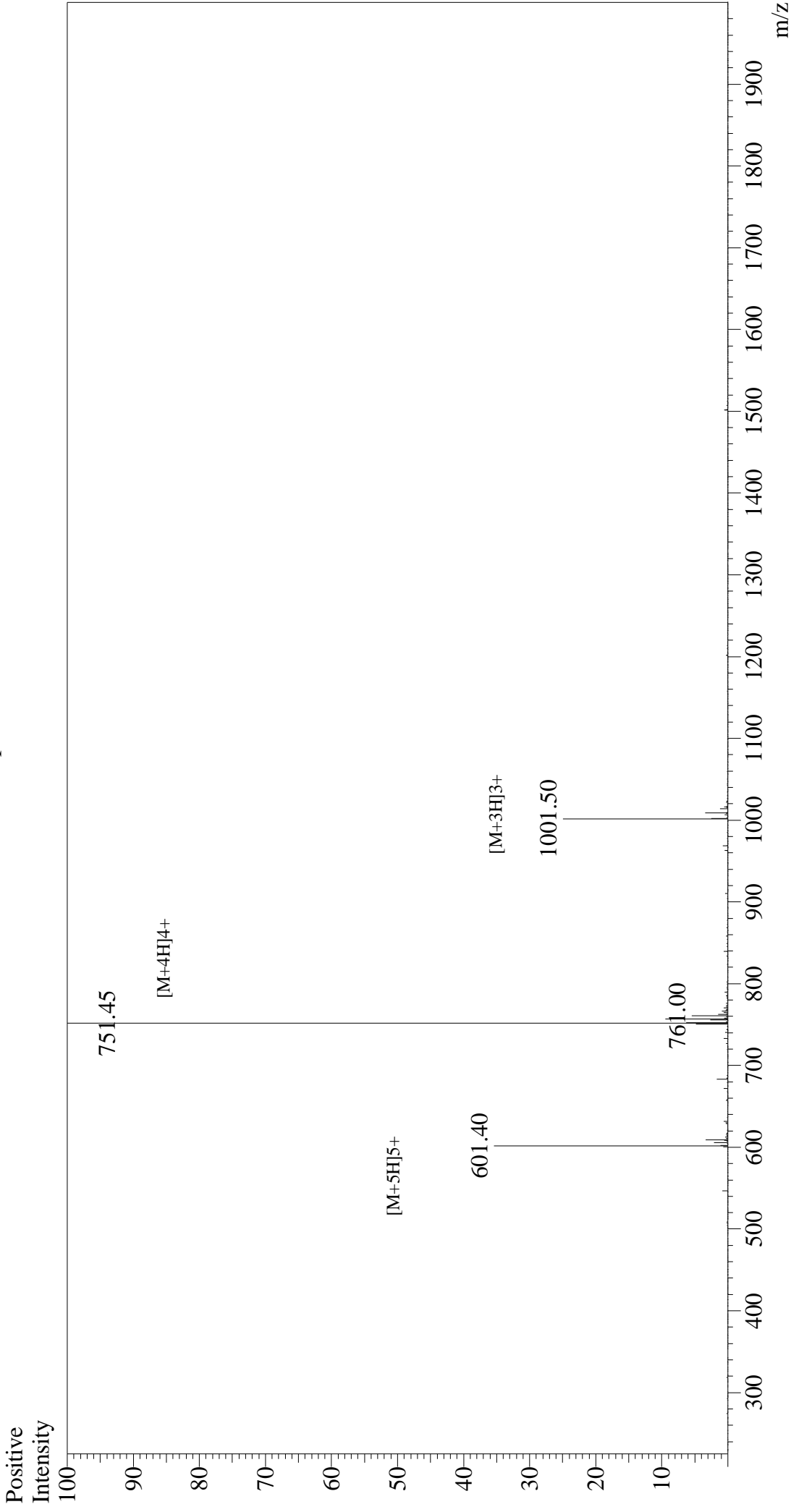
## Sample Information

Acquired by : Gary  
Month-Day Processed : 04/10/15  
Time Processed : 16:05:49  
Injection Volume : 0.2  
Sample Name : hs\_Bmf  
Sample ID : 584692-3  
Theoretical MW : 3125.54  
Observed MW : 3125.75

Interface : ESI  
Nebulizing Gas Flow : 1.5L/min  
CDL Temp : 250°C  
Block Temp : 200°C

Interface Bias : +4.5 kV  
Drying Gas Flow : 5 L/min  
T.Flow : 0.2 ml/min  
B.conc : 50%H2O/50%MeOH

# Mass Spectrum



## Sample Information

Acquired by : Gary  
Month-Day Processed : 04/12/15  
Time Processed : 17:22:15  
Injection Volume : 0.2  
Sample Name : hs\_Bok  
Sample ID : 584692-5  
Theoretical MW : 3001.54  
Observed MW : 3001.80

Interface : ESI  
Nebulizing Gas Flow : 1.5L/min  
CDL Temp : 250°C  
Block Temp : 200°C

Interface Bias : +4.5 kV  
Drying Gas Flow : 5 L/min  
T.Flow : 0.2 ml/min  
B.conc : 50%H2O/50%MeOH