

SUPPLEMENTARY ONLINE DATA

Divergent effect of mammalian PLC $\zeta$  in generating Ca<sup>2+</sup> oscillations in somatic cells compared with eggs

Sally V. PHILLIPS\*<sup>1</sup>, Yuansong YU\*<sup>1</sup>, Andreas ROSSBACH†, Michail NOMIKOS†‡, Vyronia VASSILAKOPOULOU‡, Evangelia LIVANIOU‡, Bevan CUMBES†, F. Anthony LAI†, Christopher H. GEORGE† and Karl SWANN\*<sup>2</sup>

\*Department of Obstetrics and Gynaecology, School of Medicine, Cardiff University, Heath Park, Cardiff CF14 4XN, U.K., †Department of Cardiology, School of Medicine, Cardiff University, Heath Park, Cardiff CF14 4XN, U.K., and ‡IRRP, National Center for Scientific Research, 'Demokritos' Athens, Greece

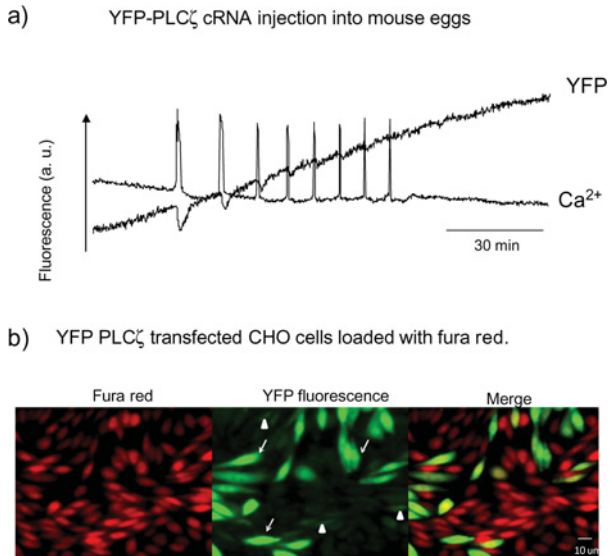


Figure S1 YFP-PLC $\zeta$  in mouse eggs and CHO cells

(a) YFP-PLC $\zeta$  cRNA injection into mouse eggs. (b) YFP-PLC $\zeta$ -transfected CHO cells loaded with fura red. The arrows show transfected CHO cells with a high level of YFP-PLC $\zeta$  (fluorescence intensity,  $0.12 \pm 0.004/\text{pixel}$ ); and the arrowheads show transfected CHO cells expressing a low level of YFP-PLC $\zeta$  (fluorescence intensity,  $0.06 \pm 0.003/\text{pixel}$ ).

Received 27 September 2010/31 May 2011; accepted 22 June 2011  
 Published as BJ Immediate Publication 22 June 2011, doi:10.1042/BJ20101581

<sup>1</sup> These authors contributed equally to this work.  
<sup>2</sup> To whom correspondence should be addressed (email swannk1@cardiff.ac.uk).